

Product Name: CIB2 Rabbit Polyclonal Antibody
Catalog #: APRab08808



Summary

Production Name	CIB2 Rabbit Polyclonal Antibody
Description	Rabbit Polyclonal Antibody
Host	Rabbit
Application	IHC,ELISA
Reactivity	Human,Mouse,Rat

Performance

Conjugation	Unconjugated
Modification	Unmodified
Isotype	IgG
Clonality	Polyclonal
Form	Liquid
Storage	Store at 4°C short term. Aliquot and store at -20°C long term. Avoid freeze/thaw cycles.
Buffer	Liquid in PBS containing 50% glycerol, 0.5% BSA and 0.02% New type preservative N.
Purification	Affinity purification

Immunogen

Gene Name	CIB2
Alternative Names	CIB2; KIP2; Calcium and integrin-binding family member 2; Kinase-interacting protein 2; KIP 2
Gene ID	10518.0
SwissProt ID	O75838.The antiserum was produced against synthesized peptide derived from human CIB2. AA range:21-70

Application

Dilution Ratio	IHC 1:100-1:300 ELISA: 1:5000
Molecular Weight	

Background

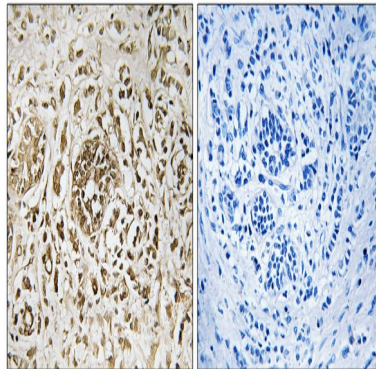
Product Name: CIB2 Rabbit Polyclonal Antibody
Catalog #: APRab08808



The protein encoded by this gene is similar to that of KIP/CIB, calcineurin B, and calmodulin. The encoded protein is a calcium-binding regulatory protein that interacts with DNA-dependent protein kinase catalytic subunits (DNA-PKcs), and it is involved in photoreceptor cell maintenance. Mutations in this gene cause deafness, autosomal recessive, 48 (DFNB48), and also Usher syndrome 1J (USH1J). Alternative splicing results in multiple transcript variants. [provided by RefSeq, Jul 2014],similarity:Contains 3 EF-hand domains.,tissue specificity:Ubiquitous.,

Research Area

Image Data



Immunohistochemistry analysis of paraffin-embedded human breast carcinoma tissue, using CIB2 Antibody. The picture on the right is blocked with the synthesized peptide.

Note

For research use only.