

## Summary

<b>Production Name</b>	Chymase Rabbit Polyclonal Antibody
<b>Description</b>	Rabbit Polyclonal Antibody
<b>Host</b>	Rabbit
<b>Application</b>	WB
<b>Reactivity</b>	Human,Rat,Mouse

## Performance

<b>Conjugation</b>	Unconjugated
<b>Modification</b>	Unmodified
<b>Isotype</b>	IgG
<b>Clonality</b>	Polyclonal
<b>Form</b>	Liquid
<b>Storage</b>	Store at 4°C short term. Aliquot and store at -20°C long term. Avoid freeze/thaw cycles.
<b>Buffer</b>	Liquid in PBS containing 50% glycerol, 0.5% BSA and 0.02% New type preservative N.
<b>Purification</b>	Affinity purification

## Immunogen

<b>Gene Name</b>	CMA1
<b>Alternative Names</b>	CMA1; CYH; CYM; Chymase; Alpha-chymase; Mast cell protease I
<b>Gene ID</b>	1215.0
<b>SwissProt ID</b>	P23946.Synthesized peptide derived from the Internal region of human Chymase.

## Application

<b>Dilution Ratio</b>	WB 1:500-1:2000. ELISA: 1:20000.
<b>Molecular Weight</b>	27kD

## Background

chymase 1(CMA1) Homo sapiens This gene encodes a chymotryptic serine proteinase that belongs to the peptidase family S1. It is expressed in mast cells and is thought to function in the degradation of the extracellular matrix, the

**Product Name: Chymase Rabbit Polyclonal Antibody**  
**Catalog #: APRab08800**

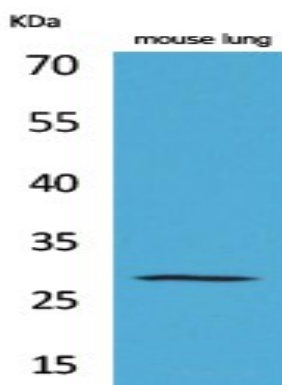


regulation of submucosal gland secretion, and the generation of vasoactive peptides. In the heart and blood vessels, this protein, rather than angiotensin converting enzyme, is largely responsible for converting angiotensin I to the vasoactive peptide angiotensin II. Alternative splicing results in multiple variants. [provided by RefSeq, Apr 2015],catalytic activity:Preferential cleavage: Phe-|-Xaa > Tyr-|-Xaa > Trp-|-Xaa > Leu-|-Xaa.,function:Major secreted protease of mast cells with suspected roles in vasoactive peptide generation, extracellular matrix degradation, and regulation of gland secretion.,similarity:Belongs to the peptidase S1 family.,similarity:Belongs to the peptidase S1 family. Granzyme subfamily.,similarity:Contains 1 peptidase S1 domain.,subcellular location:Mast cell granules.,tissue specificity:Mast cells in lung, heart, skin and placenta.,

## Research Area

Renin-angiotensin system;

## Image Data



Western Blot analysis of mouse lung cells using Chymase Polyclonal Antibody.. Secondary antibody was diluted at 1:20000

## Note

For research use only.