

Summary

Production Name	CHST2 Rabbit Polyclonal Antibody
Description	Rabbit Polyclonal Antibody
Host	Rabbit
Application	WB,ELISA
Reactivity	Human,Rat,Mouse

Performance

Conjugation	Unconjugated
Modification	Unmodified
Isotype	IgG
Clonality	Polyclonal
Form	Liquid
Storage	Store at 4°C short term. Aliquot and store at -20°C long term. Avoid freeze/thaw cycles.
Buffer	Liquid in PBS containing 50% glycerol, 0.5% BSA and 0.02% New type preservative N.
Purification	Affinity purification

Immunogen

Gene Name	CHST2
Alternative Names	CHST2; GN6ST; Carbohydrate sulfotransferase 2; Galactose/N-acetylglucosamine/N-acetylglucosamine 6-O-sulfotransferase 2; GST-2; N-acetylglucosamine 6-O-sulfotransferase 1; GlcNAc6ST-1; Gn6ST-1
Gene ID	9435.0
SwissProt ID	Q9Y4C5.The antiserum was produced against synthesized peptide derived from human CHST2. AA range:1-50

Application

Dilution Ratio	WB 1:500 - 1:2000. ELISA: 1:10000. Not yet tested in other applications.
Molecular Weight	58kD

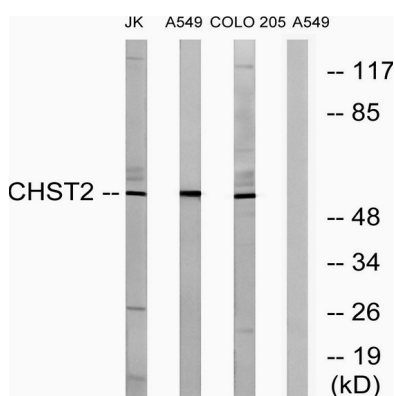
Background

This locus encodes a sulfotransferase protein. The encoded enzyme catalyzes the sulfation of a nonreducing N-acetylglucosamine residue, and may play a role in biosynthesis of 6-sulfosialyl Lewis X antigen. [provided by RefSeq, Aug 2011],caution:It is uncertain whether Met-1 or Met-48 is the initiator.,function:Catalyzes the transfer of sulfate to position 6 of non-reducing N-acetylglucosamine (GlcNAc) residues within keratan-like structures on N-linked glycans and within mucin-associated glycans that can ultimately serve as L-selectin ligands. L-selectin ligands are present in high endothelial cells (HEVs) and play a central role in lymphocyte homing at sites of inflammation. Participates in biosynthesis of L-selectin ligand sialyl 6-sulfo Lewis X and in lymphocyte homing to Peyer patches. Has no activity toward O-linked sugars. Its substrate specificity may be influenced by its subcellular location. Sulfates GlcNAc residues at terminal, non-reducing ends of oligosaccharide chains.,induction:Up-regulated upon cytokine activation.,online information:GlycoGene database,similarity:Belongs to the sulfotransferase 1 family. Gal/GlcNAc/GalNAc subfamily.,subunit:Homodimer; disulfide-linked. Homodimerization is not essential for enzyme activity.,tissue specificity:Widely expressed. Highly expressed in bone marrow, peripheral blood leukocytes, spleen, brain, spinal cord, ovary and placenta. Expressed by high endothelial cells (HEVs) and leukocytes.,

Research Area

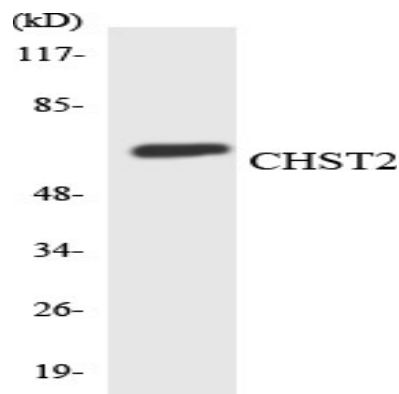
Keratan sulfate biosynthesis;

Image Data

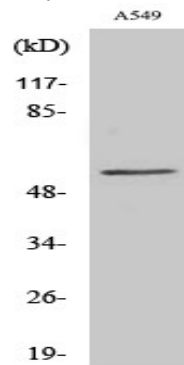


Western blot analysis of lysates from A549, COLO, and Jurkat cells, using CHST2 Antibody. The lane on the right is blocked with the synthesized peptide.

Product Name: CHST2 Rabbit Polyclonal Antibody
Catalog #: APRab08787



Western blot analysis of the lysates from K562 cells using CHST2 antibody.



Western Blot analysis of various cells using CHST2 Polyclonal Antibody

Note

For research use only.