

---

## Summary

<b>Production Name</b>	Chr-A Rabbit Polyclonal Antibody
<b>Description</b>	Rabbit Polyclonal Antibody
<b>Host</b>	Rabbit
<b>Application</b>	IHC,WB,
<b>Reactivity</b>	Human,Mouse,Rat

## Performance

<b>Conjugation</b>	Unconjugated
<b>Modification</b>	Unmodified
<b>Isotype</b>	IgG
<b>Clonality</b>	Polyclonal
<b>Form</b>	Liquid
<b>Storage</b>	Store at 4°C short term. Aliquot and store at -20°C long term. Avoid freeze/thaw cycles.
<b>Buffer</b>	Liquid in PBS containing 50% glycerol, 0.5% BSA and 0.02% New type preservative N.
<b>Purification</b>	Affinity purification

## Immunogen

<b>Gene Name</b>	CHGA
<b>Alternative Names</b>	CHGA; Chromogranin-A; CgA; Pituitary secretory protein I; SP-I
<b>Gene ID</b>	1113.0
<b>SwissProt ID</b>	P10645.The antiserum was produced against synthesized peptide derived from human Chr-A. AA range:311-360

## Application

<b>Dilution Ratio</b>	WB 1:500 - 1:2000. IHC 1:100 - 1:300. ELISA: 1:10000..
<b>Molecular Weight</b>	68kD

## Background

---

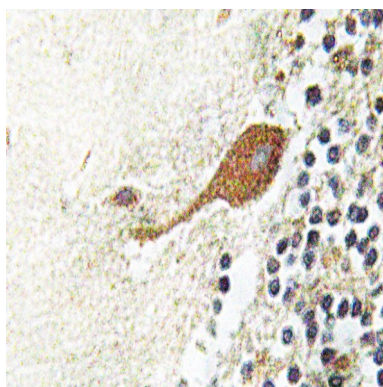
**Product Name: Chr-A Rabbit Polyclonal Antibody**  
**Catalog #: APRab08781**



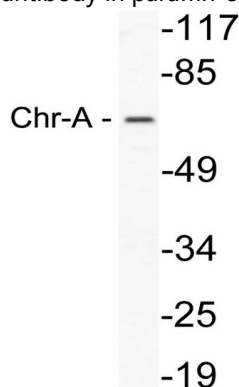
The protein encoded by this gene is a member of the chromogranin/secretogranin family of neuroendocrine secretory proteins. It is found in secretory vesicles of neurons and endocrine cells. This gene product is a precursor to three biologically active peptides; vasostatin, pancreastatin, and parastatin. These peptides act as autocrine or paracrine negative modulators of the neuroendocrine system. Two other peptides, catestatin and chromofungin, have antimicrobial activity and antifungal activity, respectively. Two transcript variants encoding different isoforms have been found for this gene. [provided by RefSeq, Sep 2014],function:Pancreastatin strongly inhibits glucose induced insulin release from the pancreas.,miscellaneous:Binds calcium with a low-affinity.,PTM:Sulfated on tyrosine residues and/or contains sulfated glycans.,similarity:Belongs to the chromogranin/secretogranin protein family.,subcellular location:Neuroendocrine and endocrine secretory granules.,

## Research Area

## Image Data

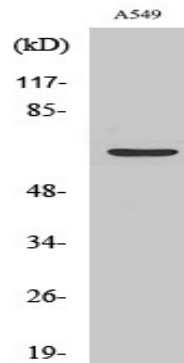


Immunohistochemistry analysis of Chr-A antibody in paraffin-embedded human brain tissue.

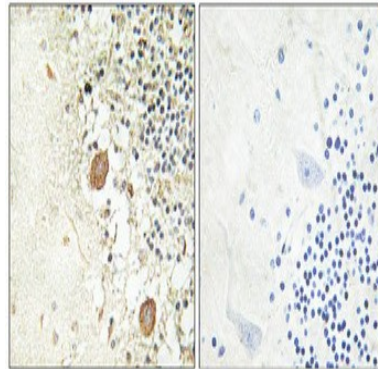


Western blot analysis of lysate from A549 cells, using Chr-A antibody.

**Product Name: Chr-A Rabbit Polyclonal Antibody**  
**Catalog #: APRab08781**



Western Blot analysis of various cells using Chr-A Polyclonal Antibody



Immunohistochemical analysis of paraffin-embedded Human brain. Antibody was diluted at 1:100 (4°, overnight) . High-pressure and temperature Tris-EDTA, pH 8.0 was used for antigen retrieval. Negative control (right) obtained from antibody was pre-absorbed by immunogen peptide.

## **Note**

For research use only.