

Product Name: CHP2 Rabbit Polyclonal Antibody
Catalog #: APRab08779



Summary

| | |
|------------------------|---------------------------------|
| Production Name | CHP2 Rabbit Polyclonal Antibody |
| Description | Rabbit Polyclonal Antibody |
| Host | Rabbit |
| Application | WB,ELISA |
| Reactivity | Human,Mouse,Rat |

Performance

| | |
|---------------------|--|
| Conjugation | Unconjugated |
| Modification | Unmodified |
| Isotype | IgG |
| Clonality | Polyclonal |
| Form | Liquid |
| Storage | Store at 4°C short term. Aliquot and store at -20°C long term. Avoid freeze/thaw cycles. |
| Buffer | Liquid in PBS containing 50% glycerol, 0.5% BSA and 0.02% New type preservative N. |
| Purification | Affinity purification |

Immunogen

| | |
|--------------------------|---|
| Gene Name | CHP2 |
| Alternative Names | CHP2; HCA520; Calcineurin B homologous protein 2; Hepatocellular carcinoma-associated antigen 520 |
| Gene ID | 63928.0 |
| SwissProt ID | O43745.The antiserum was produced against synthesized peptide derived from human CHP2. AA range:101-150 |

Application

| | |
|-------------------------|------------------------------------|
| Dilution Ratio | WB 1:500 - 1:2000. ELISA: 1:40000. |
| Molecular Weight | 22kD |

Background

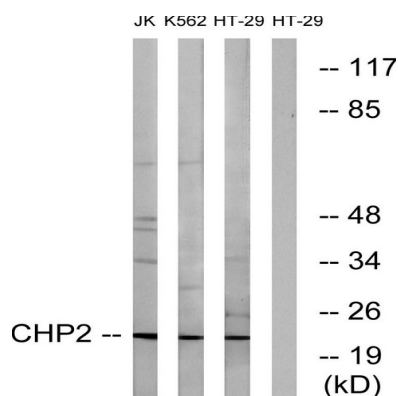
This gene product is a small calcium-binding protein that regulates cell pH by controlling plasma membrane-type Na⁺/H⁺ exchange activity. This protein shares sequence similarity with calcineurin B and can bind to and stimulate the protein phosphatase activity of calcineurin A (CnA) and functions in the calcineurin/NFAT (nuclear factor of activated T cells) signaling pathway. Another member of the CHP subfamily, Calcineurin B homologous protein 1, is located on Chromosome 15 and is an inhibitor of calcineurin activity and has a genetic phenotype associated with Parkinson's Disease (OMIM:606988). This gene was initially identified as a tumor-associated antigen and was previously referred to as Hepatocellular carcinoma-associated antigen 520. [provided by RefSeq, Jul 2013],function: Binds to and activates SLC9A1/NHE1 in a serum-independent manner, thus increasing pH and protecting cells from serum deprivation-induced death.,similarity: Contains 4 EF-hand domains.,subunit: Binds to SLC9A1/NHE1.,tissue specificity: Expressed in malignantly transformed cells but not detected in normal tissues.,

Research Area

MAPK_ERK_Growth;MAPK_G_Protein;Calcium;Oocyte

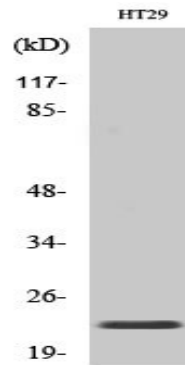
meiosis;Apoptosis_Inhibition;Apoptosis_Mitochondrial;Apoptosis_Overview;WNT;WNT-T CELL Axon guidance;VEGF;Natural killer cell mediated cytotoxicity;T_Cell_Receptor;B_Cell_Antigen;Long-term potentiation;Alzheimer's disease;Amyotrophic lateral sclerosis (ALS);

Image Data



Western blot analysis of lysates from HT-29, K562, and Jurkat cells, using CHP2 Antibody. The lane on the right is blocked with the synthesized peptide.

Product Name: CHP2 Rabbit Polyclonal Antibody
Catalog #: APRab08779



Western Blot analysis of various cells using CHP2 Polyclonal Antibody

Note

For research use only.