
Summary

Production Name	CHOP Rabbit Polyclonal Antibody
Description	Rabbit Polyclonal Antibody
Host	Rabbit
Application	WB,IHC,IF,ELISA
Reactivity	Human,Mouse

Performance

Conjugation	Unconjugated
Modification	Unmodified
Isotype	IgG
Clonality	Polyclonal
Form	Liquid
Storage	Store at 4°C short term. Aliquot and store at -20°C long term. Avoid freeze/thaw cycles.
Buffer	Liquid in PBS containing 50% glycerol, 0.5% BSA and 0.02% New type preservative N.
Purification	Affinity purification

Immunogen

Gene Name	DDIT3 DDIT3; CHOP; CHOP10; GADD153; DNA damage-inducible transcript 3 protein; DDIT-3;
Alternative Names	C/EBP-homologous protein; CHOP; C/EBP-homologous protein 10; CHOP-10; Growth arrest and DNA damage-inducible protein GADD153
Gene ID	1649.0
SwissProt ID	P35638.The antiserum was produced against synthesized peptide derived from human CHOP. AA range:15-64

Application

Dilution Ratio	WB 1:500 - 1:2000. IHC 1:100 - 1:300. IF 1:200 - 1:1000. ELISA: 1:5000. Not yet tested in other applications.
-----------------------	---

Product Name: CHOP Rabbit Polyclonal Antibody
Catalog #: APRab08774



Molecular Weight 19kD

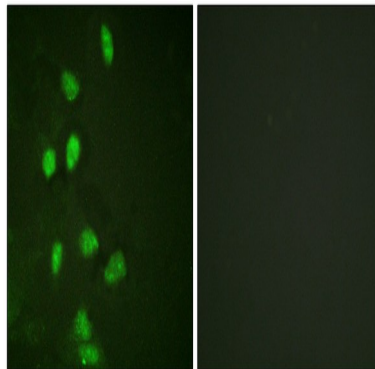
Background

This gene encodes a member of the CCAAT/enhancer-binding protein (C/EBP) family of transcription factors. The protein functions as a dominant-negative inhibitor by forming heterodimers with other C/EBP members, such as C/EBP and LAP (liver activator protein), and preventing their DNA binding activity. The protein is implicated in adipogenesis and erythropoiesis, is activated by endoplasmic reticulum stress, and promotes apoptosis. Fusion of this gene and FUS on chromosome 16 or EWSR1 on chromosome 22 induced by translocation generates chimeric proteins in myxoid liposarcomas or Ewing sarcoma. Multiple alternatively spliced transcript variants encoding two isoforms with different length have been identified. [provided by RefSeq, Aug 2010],disease:A chromosomal aberration involving DDIT3 is found in a form of malignant myxoid liposarcoma [MIM:126337]. Translocation t(12;16)(q13;p11) with FUS.,function:Inhibits the DNA-binding activity of C/EBP and LAP by forming heterodimers that cannot bind DNA.,similarity:Belongs to the bZIP family.,similarity:Contains 1 bZIP domain.,subunit:Heterodimer.,

Research Area

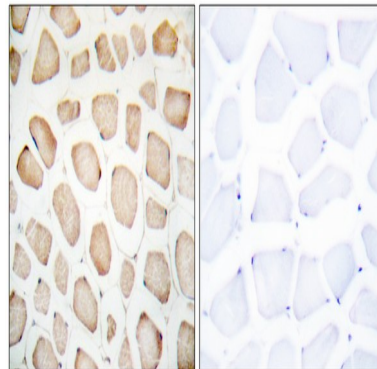
MAPK_ERK_Growth;MAPK_G_Protein;

Image Data

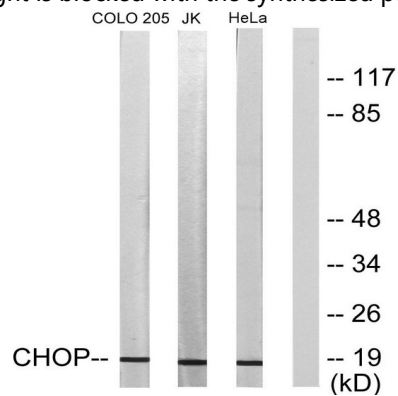


Immunofluorescence analysis of HeLa cells, using CHOP Antibody. The picture on the right is blocked with the synthesized peptide.

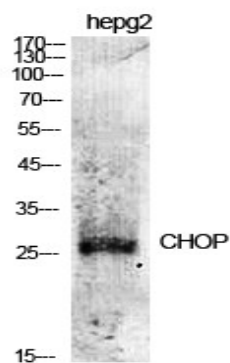
Product Name: CHOP Rabbit Polyclonal Antibody
Catalog #: APRab08774



Immunohistochemistry analysis of paraffin-embedded human skeletal muscle tissue, using CHOP Antibody. The picture on the right is blocked with the synthesized peptide.

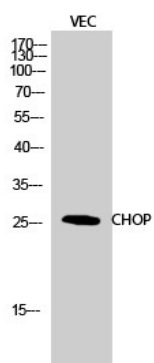


Western blot analysis of lysates from HeLa, Jurkat, and COLO205 cells, using CHOP Antibody. The lane on the right is blocked with the synthesized peptide.



Western Blot analysis of various cells using CHOP Polyclonal Antibody diluted at 1: 500

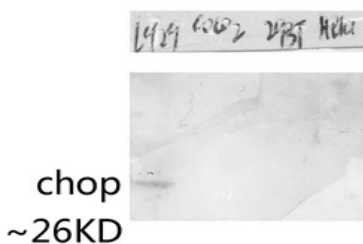
Product Name: CHOP Rabbit Polyclonal Antibody
Catalog #: APRab08774



Western Blot analysis of VEC cells using CHOP Polyclonal Antibody diluted at 1 : 500



Western blot analysis of various lysis using CHOP Polyclonal Antibody diluted at 1 : 500. Secondary antibody was diluted at 1:20000



Western blot analysis of various lysis using CHOP Polyclonal Antibody diluted at 1 : 500. Secondary antibody was diluted at 1:20000

Note

For research use only.