

Summary

Production Name	ChoKB Rabbit Polyclonal Antibody
Description	Rabbit Polyclonal Antibody
Host	Rabbit
Application	WB,ELISA
Reactivity	Human,Rat,Mouse

Performance

Conjugation	Unconjugated
Modification	Unmodified
Isotype	IgG
Clonality	Polyclonal
Form	Liquid
Storage	Store at 4°C short term. Aliquot and store at -20°C long term. Avoid freeze/thaw cycles.
Buffer	Liquid in PBS containing 50% glycerol, 0.5% BSA and 0.02% New type preservative N.
Purification	Affinity purification

Immunogen

Gene Name	CHKB CHKB; CHETK; CHKL; Choline/ethanolamine kinase; Choline kinase beta; CK; CKB;
Alternative Names	Choline kinase-like protein; Ethanolamine kinase; EK; Ethanolamine kinase beta; EKB; choline/ethanolamine kinase beta; CKEKB
Gene ID	1120.0
SwissProt ID	Q9Y259.The antiserum was produced against synthesized peptide derived from human CHKB. AA range:301-350

Application

Dilution Ratio	WB 1:500 - 1:2000. ELISA: 1:20000
Molecular Weight	45kD

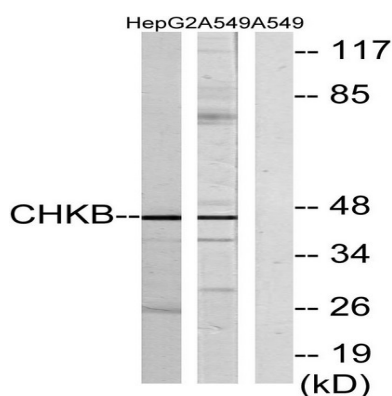
Background

Choline kinase (CK) and ethanolamine kinase (EK) catalyze the phosphorylation of choline/ethanolamine to phosphocholine/phosphoethanolamine. This is the first enzyme in the biosynthesis of phosphatidylcholine/phosphatidylethanolamine in all animal cells. The highly purified CKs from mammalian sources and their recombinant gene products have been shown to have EK activity also, indicating that both activities reside on the same protein. The choline kinase-like protein encoded by CHKL belongs to the choline/ethanolamine kinase family; however, its exact function is not known. Read-through transcripts are expressed from this locus that include exons from the downstream CPT1B locus. [provided by RefSeq, Jun 2009],catalytic activity:ATP + choline = ADP + O-phosphocholine.,catalytic activity:ATP + ethanolamine = ADP + O-phosphoethanolamine.,catalytic activity:Palmitoyl-CoA + L-carnitine = CoA + L-palmitoylcarnitine.,miscellaneous:This protein is produced by a bicistronic gene which also produces the CHKB protein from a non-overlapping reading frame.,miscellaneous:This protein is produced by a bicistronic gene which also produces the CPT1B protein from a non-overlapping reading frame.,pathway:Lipid metabolism; fatty acid beta-oxidation.,similarity:Belongs to the carnitine/choline acetyltransferase family.,similarity:Belongs to the choline/ethanolamine kinase family.,tissue specificity:Strong expression in heart and skeletal muscle. No expression in liver and kidney.,

Research Area

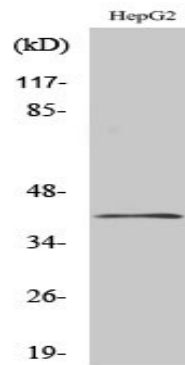
Fatty acid metabolism;Glycerophospholipid metabolism;PPAR;Adipocytokine;

Image Data



Western blot analysis of lysates from HepG2 and A549 cells, using CHKB Antibody. The lane on the right is blocked with the synthesized peptide.

Product Name: ChoKB Rabbit Polyclonal Antibody
Catalog #: APRab08773



Western Blot analysis of various cells using ChoKB Polyclonal Antibody

Note

For research use only.