

Summary

Production Name	CHID1 Rabbit Polyclonal Antibody
Description	Rabbit Polyclonal Antibody
Host	Rabbit
Application	WB
Reactivity	Human,Mouse,Rat

Performance

Conjugation	Unconjugated
Modification	Unmodified
Isotype	IgG
Clonality	Polyclonal
Form	Liquid
Storage	Store at 4°C short term. Aliquot and store at -20°C long term. Avoid freeze/thaw cycles.
Buffer	Liquid in PBS containing 50% glycerol, 0.5% BSA and 0.02% New type preservative N.
Purification	Affinity purification

Immunogen

Gene Name	CHID1 GL008 PSEC0104 SB139
Alternative Names	CHID1 GL008 PSEC0104 SB139
Gene ID	66005.0
SwissProt ID	Q9BWS9.The antiserum was produced against synthesized peptide derived from the Internal region of human CHID1. AA range:81-130

Application

Dilution Ratio	WB 1:500-2000, ELISA 1:10000-20000
Molecular Weight	45kD

Background

induction:Up-regulated by interleukin-4 and dexamethasone in the macrophages.,similarity:Belongs to the glycosyl

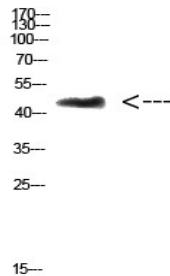
Product Name: CHID1 Rabbit Polyclonal Antibody
Catalog #: APRab08759



hydrolase 18 family.,subunit:Interacts with STAB1.,tissue specificity:Expressed in cells of monocytic, T, B and epithelial origin.,induction:Up-regulated by interleukin-4 and dexamethasone in the macrophages.,similarity:Belongs to the glycosyl hydrolase 18 family.,subunit:Interacts with STAB1.,tissue specificity:Expressed in cells of monocytic, T, B and epithelial origin.,

Research Area

Image Data



Western Blot analysis of 3T3 cells using Antibody diluted at 500. Secondary antibody was diluted at 1:20000

Note

For research use only.