

**Product Name: Chemokine Receptor D6 Rabbit Polyclonal Antibody**  
**Catalog #: APRab08754**

---

## Summary

<b>Production Name</b>	Chemokine Receptor D6 Rabbit Polyclonal Antibody
<b>Description</b>	Rabbit Polyclonal Antibody
<b>Host</b>	Rabbit
<b>Application</b>	IF, WB,
<b>Reactivity</b>	Human, Rat, Mouse

## Performance

<b>Conjugation</b>	Unconjugated
<b>Modification</b>	Unmodified
<b>Isotype</b>	IgG
<b>Clonality</b>	Polyclonal
<b>Form</b>	Liquid
<b>Storage</b>	Store at 4°C short term. Aliquot and store at -20°C long term. Avoid freeze/thaw cycles.
<b>Buffer</b>	Liquid in PBS containing 50% glycerol, 0.5% BSA and 0.02% New type preservative N.
<b>Purification</b>	Affinity purification

## Immunogen

<b>Gene Name</b>	CCBP2 CCBP2; CCR10; CMKBR9; Chemokine-binding protein 2; C-C chemokine receptor D6;
<b>Alternative Names</b>	Chemokine receptor CCR-10; Chemokine receptor CCR-9; Chemokine-binding protein D6
<b>Gene ID</b>	1238.0
<b>SwissProt ID</b>	O00590. The antiserum was produced against synthesized peptide derived from human CCBP2. AA range:335-384

## Application

<b>Dilution Ratio</b>	WB 1:500 - 1:2000. IF 1:200 - 1:1000. ELISA: 1:10000. Not yet tested in other
-----------------------	---

**Product Name: Chemokine Receptor D6 Rabbit  
Polyclonal Antibody  
Catalog #: APRab08754**

---

applications.

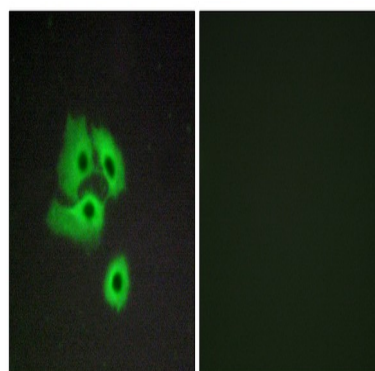
**Molecular Weight** 34kD

## Background

This gene encodes a beta chemokine receptor, which is predicted to be a seven transmembrane protein similar to G protein-coupled receptors. Chemokines and their receptor-mediated signal transduction are critical for the recruitment of effector immune cells to the inflammation site. This gene is expressed in a range of tissues and hemopoietic cells. The expression of this receptor in lymphatic endothelial cells and overexpression in vascular tumors suggested its function in chemokine-driven recirculation of leukocytes and possible chemokine effects on the development and growth of vascular tumors. This receptor appears to bind the majority of beta-chemokine family members; however, its specific function remains unknown. This gene is mapped to chromosome 3p21.3, a region that includes a cluster of chemokine receptor genes. [provided by RefSeq, Jul 2008],function:Receptor for C-C type chemokines including SCYA2/MCP-1, SCY3/MIP-1-alpha, SCYA5/RANTES and SCYA7/MCP-3.,similarity:Belongs to the G-protein coupled receptor 1 family.,tissue specificity:Expressed primarily in placenta and fetal liver, and found at very low levels in the lung and lymph node. Found in endothelial cells lining afferent lymphatics in dermis and lymph nodes. Also found in lymph nodes subcapsular and medullary sinuses, tonsillar lymphatic sinuses and lymphatics in mucosa and submucosa of small and large intestine and appendix. Also found in some malignant vascular tumors.,

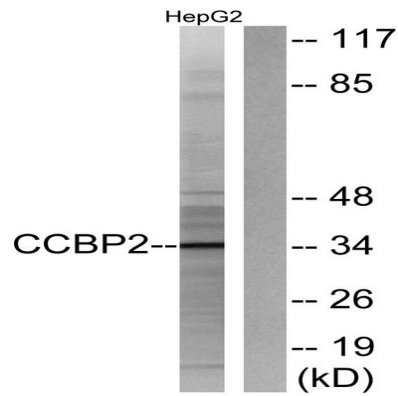
## Research Area

## Image Data

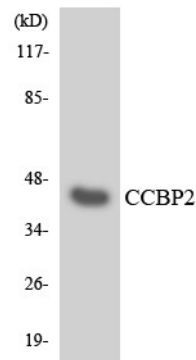


Immunofluorescence analysis of COS7 cells, using CCBP2 Antibody. The picture on the right is blocked with the synthesized peptide.

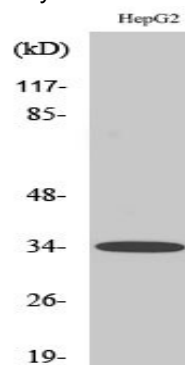
**Product Name: Chemokine Receptor D6 Rabbit  
Polyclonal Antibody  
Catalog #: APRab08754**



Western blot analysis of lysates from HepG2 cells, using CCBP2 Antibody. The lane on the right is blocked with the synthesized peptide.



Western blot analysis of the lysates from HT-29 cells using CCBP2 antibody.



Western Blot analysis of various cells using Chemokine Receptor D6 Polyclonal Antibody

## Note

For research use only.