

## Summary

<b>Production Name</b>	cGKII Rabbit Polyclonal Antibody
<b>Description</b>	Rabbit Polyclonal Antibody
<b>Host</b>	Rabbit
<b>Application</b>	WB,ELISA
<b>Reactivity</b>	Human,Mouse,Rat

## Performance

<b>Conjugation</b>	Unconjugated
<b>Modification</b>	Unmodified
<b>Isotype</b>	IgG
<b>Clonality</b>	Polyclonal
<b>Form</b>	Liquid
<b>Storage</b>	Store at 4°C short term. Aliquot and store at -20°C long term. Avoid freeze/thaw cycles.
<b>Buffer</b>	Liquid in PBS containing 50% glycerol, 0.5% BSA and 0.02% New type preservative N.
<b>Purification</b>	Affinity purification

## Immunogen

<b>Gene Name</b>	PRKG2
<b>Alternative Names</b>	PRKG2; PRKGR2; cGMP-dependent protein kinase 2; cGK 2; cGK2; cGMP-dependent protein kinase II; cGKII
<b>Gene ID</b>	5593.0
<b>SwissProt ID</b>	Q13237.The antiserum was produced against synthesized peptide derived from human PKG2. AA range:92-141

## Application

<b>Dilution Ratio</b>	WB 1:500 - 1:2000. ELISA: 1:40000..
<b>Molecular Weight</b>	87kD

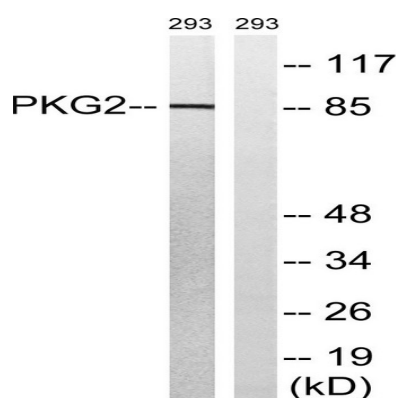
## Background

This gene encodes a protein that belongs to the serine/threonine protein kinase family of proteins. The encoded protein plays a role in the regulation of fluid balance in the intestine. A similar protein in mouse is thought to regulate differentiation and proliferation of cells in the colon. Alternate splicing results in multiple transcript variants. [provided by RefSeq, Sep 2013],catalytic activity:ATP + a protein = ADP + a phosphoprotein.,enzyme regulation:Binding of cGMP results in enzyme activation.,similarity:Belongs to the protein kinase superfamily. AGC Ser/Thr protein kinase family. cGMP subfamily.,similarity:Contains 1 AGC-kinase C-terminal domain.,similarity:Contains 1 protein kinase domain.,similarity:Contains 2 cyclic nucleotide-binding domains.,tissue specificity:Highly concentrated in brain, lung and intestinal mucosa.,

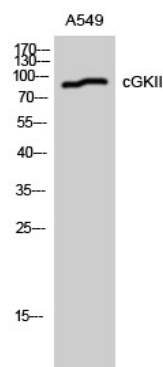
## Research Area

Gap junction;Long-term depression;Olfactory transduction;

## Image Data

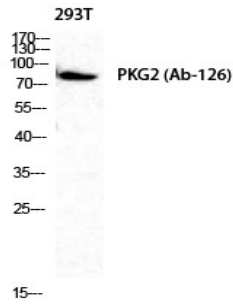


Western blot analysis of lysates from 293 cells, treated with anisomycin 25ug/ml 30', using PKG2 Antibody. The lane on the right is blocked with the synthesized peptide.



Western Blot analysis of A549 cells using cGKII Polyclonal Antibody diluted at 1: 1000

**Product Name: cGKII Rabbit Polyclonal Antibody**  
**Catalog #: APRab08722**



Western Blot analysis of 293T cells using cGKII Polyclonal Antibody diluted at 1 : 1000

**Note**

For research use only.