

**Product Name: CGI-43 Rabbit Polyclonal Antibody**  
**Catalog #: APRab08721**



## Summary

<b>Production Name</b>	CGI-43 Rabbit Polyclonal Antibody
<b>Description</b>	Rabbit Polyclonal Antibody
<b>Host</b>	Rabbit
<b>Application</b>	WB,ELISA
<b>Reactivity</b>	Human,Mouse,Monkey

## Performance

<b>Conjugation</b>	Unconjugated
<b>Modification</b>	Unmodified
<b>Isotype</b>	IgG
<b>Clonality</b>	Polyclonal
<b>Form</b>	Liquid
<b>Storage</b>	Store at 4°C short term. Aliquot and store at -20°C long term. Avoid freeze/thaw cycles.
<b>Buffer</b>	Liquid in PBS containing 50% glycerol, 0.5% BSA and 0.02% New type preservative N.
<b>Purification</b>	Affinity purification

## Immunogen

<b>Gene Name</b>	CCZ1/C7orf28B
<b>Alternative Names</b>	CCZ1; C7orf28A; CGI-43; Vacuolar fusion protein CCZ1 homolog; CCZ1B; C7orf28B; Vacuolar fusion protein CCZ1 homolog B; Vacuolar fusion protein CCZ1 homolog-like
<b>Gene ID</b>	221960.0
<b>SwissProt ID</b>	P86791/P86790.The antiserum was produced against synthesized peptide derived from human CG028. AA range:411-460

## Application

<b>Dilution Ratio</b>	WB 1:500 - 1:2000. ELISA: 1:10000
<b>Molecular Weight</b>	56kD

**Product Name: CGI-43 Rabbit Polyclonal Antibody**  
**Catalog #: APRab08721**

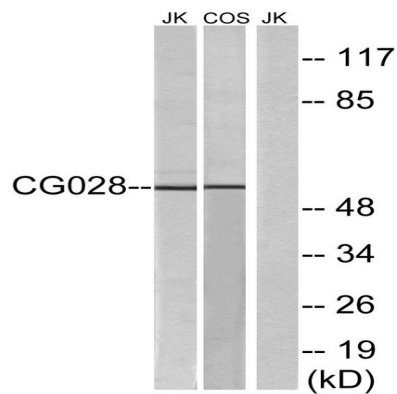


## Background

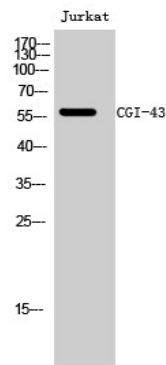
similarity:Belongs to the UPF0550 family.,similarity:Belongs to the UPF0550 family.,

## Research Area

## Image Data



Western blot analysis of lysates from Jurkat and COS cells, using CG028 Antibody. The lane on the right is blocked with the synthesized peptide.



Western Blot analysis of Jurkat cells using CGI-43 Polyclonal Antibody diluted at 1: 500

## Note

For research use only.