

Summary

Production Name	c-Fms Rabbit Polyclonal Antibody
Description	Rabbit Polyclonal Antibody
Host	Rabbit
Application	IF,IHC,WB,ELISA
Reactivity	Human,Rat,Mouse

Performance

Conjugation	Unconjugated
Modification	Unmodified
Isotype	IgG
Clonality	Polyclonal
Form	Liquid
Storage	Store at 4°C short term. Aliquot and store at -20°C long term. Avoid freeze/thaw cycles.
Buffer	Liquid in PBS containing 50% glycerol, 0.5% BSA and 0.02% New type preservative N.
Purification	Affinity purification

Immunogen

Gene Name	CSF1R
Alternative Names	CSF1R; FMS; Macrophage colony-stimulating factor 1 receptor; CSF-1 receptor; CSF-1-R; CSF-1R; M-CSF-R; Proto-oncogene c-Fms; CD antigen CD115
Gene ID	1436.0
SwissProt ID	P07333.The antiserum was produced against synthesized peptide derived from human CSFR. AA range:781-830

Application

Dilution Ratio	WB 1:500 - 1:2000. IHC 1:100 - 1:300. IF 1:200 - 1:1000. ELISA: 1:40000. Not yet tested in other applications.
Molecular Weight	130-170kD

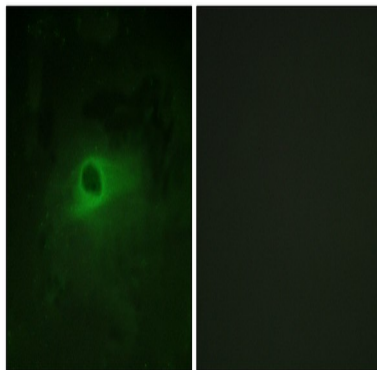
Background

The protein encoded by this gene is the receptor for colony stimulating factor 1, a cytokine which controls the production, differentiation, and function of macrophages. This receptor mediates most if not all of the biological effects of this cytokine. Ligand binding activates the receptor kinase through a process of oligomerization and transphosphorylation. The encoded protein is a tyrosine kinase transmembrane receptor and member of the CSF1/PDGF receptor family of tyrosine-protein kinases. Mutations in this gene have been associated with a predisposition to myeloid malignancy. The first intron of this gene contains a transcriptionally inactive ribosomal protein L7 processed pseudogene oriented in the opposite direction. Alternative splicing results in multiple transcript variants. [provided by RefSeq, Dec 2013], catalytic activity: ATP + a [protein]-L-tyrosine = ADP + a [protein]-L-tyrosine phosphate, function: Protein tyrosine-kinase transmembrane receptor for CSF1 and IL34, similarity: Belongs to the protein kinase superfamily. Tyr protein kinase family, similarity: Belongs to the protein kinase superfamily. Tyr protein kinase family. CSF-1/PDGF receptor subfamily, similarity: Contains 1 protein kinase domain, similarity: Contains 5 Ig-like C2-type (immunoglobulin-like) domains, subunit: Interacts with INPPL1/SHIP2 and THOC5, tissue specificity: Expressed in bone marrow and in differentiated blood mononuclear cells,

Research Area

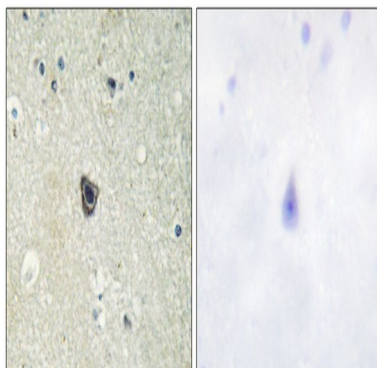
Cytokine-cytokine receptor interaction; Endocytosis; Hematopoietic cell lineage; Pathways in cancer;

Image Data

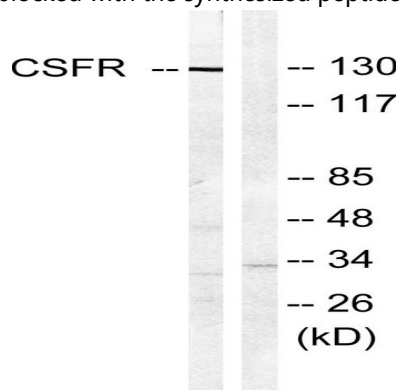


Immunofluorescence analysis of HeLa cells, using CSFR Antibody. The picture on the right is blocked with the synthesized peptide.

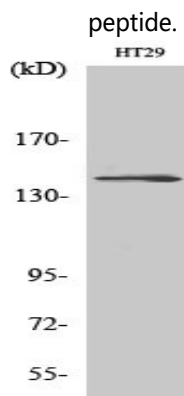
Product Name: c-Fms Rabbit Polyclonal Antibody
Catalog #: APRab08705



Immunohistochemistry analysis of paraffin-embedded human brain tissue, using CSFR Antibody. The picture on the right is blocked with the synthesized peptide.

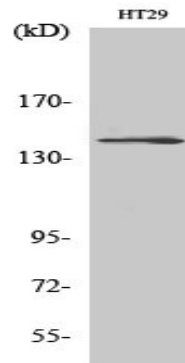


Western blot analysis of lysates from HT29 cells, using CSFR Antibody. The lane on the right is blocked with the synthesized peptide.



Western Blot analysis of various cells using c-Fms Polyclonal Antibody

Product Name: c-Fms Rabbit Polyclonal Antibody
Catalog #: APRab08705



Western Blot analysis of HT29 cells using c-Fms Polyclonal Antibody

Note

For research use only.