

---

## Summary

<b>Production Name</b>	CEP70 Rabbit Polyclonal Antibody
<b>Description</b>	Rabbit Polyclonal Antibody
<b>Host</b>	Rabbit
<b>Application</b>	WB,IHC,ELISA
<b>Reactivity</b>	Human,Monkey

## Performance

<b>Conjugation</b>	Unconjugated
<b>Modification</b>	Unmodified
<b>Isotype</b>	IgG
<b>Clonality</b>	Polyclonal
<b>Form</b>	Liquid
<b>Storage</b>	Store at 4°C short term. Aliquot and store at -20°C long term. Avoid freeze/thaw cycles.
<b>Buffer</b>	Liquid in PBS containing 50% glycerol, 0.5% BSA and 0.02% New type preservative N.
<b>Purification</b>	Affinity purification

## Immunogen

<b>Gene Name</b>	CEP70
<b>Alternative Names</b>	CEP70; BITE; Centrosomal protein of 70 kDa; Cep70; p10-binding protein
<b>Gene ID</b>	80321.0
<b>SwissProt ID</b>	Q8NHQ1.The antiserum was produced against synthesized peptide derived from human CEP70. AA range:241-290

## Application

<b>Dilution Ratio</b>	WB 1:500 - 1:2000. IHC 1:100 - 1:300. ELISA: 1:40000..
<b>Molecular Weight</b>	70kD

## Background

---

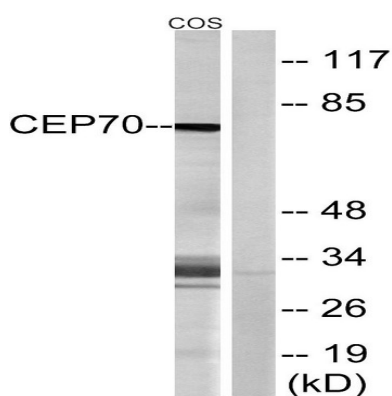
**Product Name: CEP70 Rabbit Polyclonal Antibody**  
**Catalog #: APRab08671**



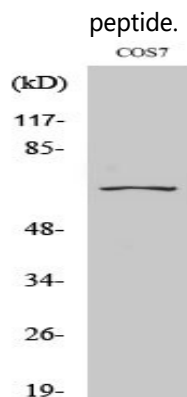
similarity:Contains 1 TPR repeat.,similarity:Contains 1 TPR repeat.,

## Research Area

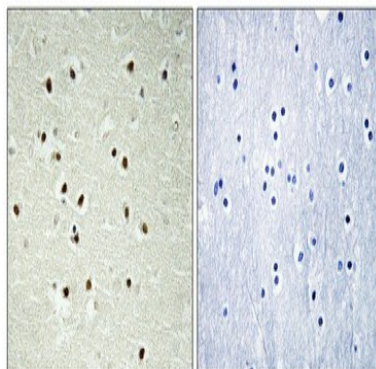
## Image Data



Western blot analysis of lysates from COS cells, using CEP70 Antibody. The lane on the right is blocked with the synthesized peptide.



Western Blot analysis of various cells using CEP70 Polyclonal Antibody diluted at 1: 2000



Immunohistochemical analysis of paraffin-embedded Human brain. Antibody was diluted at 1:100 (4°,overnight) . High-pressure and temperature Tris-EDTA,pH8.0 was used for antigen retrieval. Negative control (right) obtained from antibody

**Product Name: CEP70 Rabbit Polyclonal Antibody**  
**Catalog #: APRab08671**



---

was pre-absorbed by immunogen peptide.

**Note**

For research use only.