

Summary

Production Name	CEP41 Rabbit Polyclonal Antibody
Description	Rabbit Polyclonal Antibody
Host	Rabbit
Application	IHC,ELISA
Reactivity	Human,Rat,Mouse

Performance

Conjugation	Unconjugated
Modification	Unmodified
Isotype	IgG
Clonality	Polyclonal
Form	Liquid
Storage	Store at 4°C short term. Aliquot and store at -20°C long term. Avoid freeze/thaw cycles.
Buffer	Liquid in PBS containing 50% glycerol, 0.5% BSA and 0.02% New type preservative N.
Purification	Affinity purification

Immunogen

Gene Name	CEP41
Alternative Names	CEP41; TSGA14; Centrosomal protein of 41 kDa; Cep41; Testis-specific gene A14 protein
Gene ID	95681.0
SwissProt ID	Q9BYV8.The antiserum was produced against synthesized peptide derived from human CEP41. AA range:150-200

Application

Dilution Ratio	IHC 1:100-1:300 ELISA: 1:40000
Molecular Weight	41kD

Background

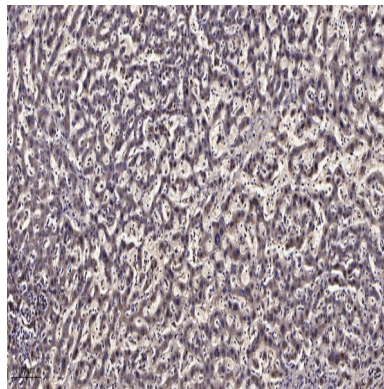
Product Name: CEP41 Rabbit Polyclonal Antibody
Catalog #: APRab08664



This gene encodes a centrosomal and microtubule-binding protein which is predicted to have two coiled-coil domains and a rhodanese domain. In human retinal pigment epithelial cells the protein localized to centrioles and cilia. Mutations in this gene have been associated with Joubert Syndrome 15; an autosomal recessive ciliopathy and neurological disorder. Alternative splicing results in multiple transcript variants. [provided by RefSeq, Mar 2012],similarity:Contains 1 rhodanese domain.,tissue specificity:Isoform 1 and isoform 4 are expressed in testis and fetal tissues.,

Research Area

Image Data



Immunohistochemical analysis of paraffin-embedded human liver cancer. 1, Antibody was diluted at 1:200 (4° overnight) .
2, Tris-EDTA,pH9.0 was used for antigen retrieval. 3,Secondary antibody was diluted at 1:200 (room temperature, 45min) .

Note

For research use only.