

Product Name: CEP350 Rabbit Polyclonal Antibody
Catalog #: APRab08663



Summary

Production Name	CEP350 Rabbit Polyclonal Antibody
Description	Rabbit Polyclonal Antibody
Host	Rabbit
Application	IHC,ELISA
Reactivity	Human,Rat,Mouse

Performance

Conjugation	Unconjugated
Modification	Unmodified
Isotype	IgG
Clonality	Polyclonal
Form	Liquid
Storage	Store at 4°C short term. Aliquot and store at -20°C long term. Avoid freeze/thaw cycles.
Buffer	Liquid in PBS containing 50% glycerol, 0.5% BSA and 0.02% New type preservative N.
Purification	Affinity purification

Immunogen

Gene Name	CEP350
Alternative Names	CEP350; CAP350; KIAA0480; GM133; Centrosome-associated protein 350; Cep350; Centrosome-associated protein of 350 kDa
Gene ID	9857.0
SwissProt ID	Q5VT06.The antiserum was produced against synthesized peptide derived from human CEP35. AA range:671-720

Application

Dilution Ratio	IHC 1:100-1:300 ELISA: 1:40000
Molecular Weight	

Background

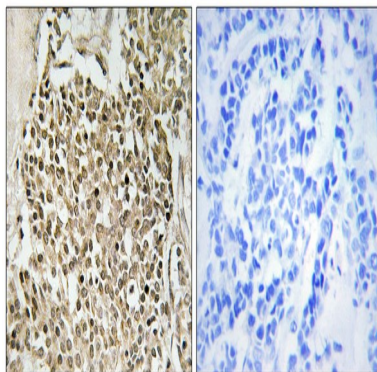
Product Name: CEP350 Rabbit Polyclonal Antibody
Catalog #: APRab08663



centrosomal protein 350(CEP350) Homo sapiens The product of this gene is a large protein with a CAP-Gly domain typically found in cytoskeleton-associated proteins. The encoded protein primarily localizes to the centrosome, a non-membraneous organelle that functions as the major microtubule-organizing center in animal cells. The encoded protein directly interacts with another large centrosomal protein and is required to anchor microtubules at the centrosome. It is also implicated in the regulation of a class of nuclear hormone receptors in the nucleus. Several alternatively spliced transcript variants have been found, but their full-length nature has not been determined. [provided by RefSeq, Jul 2008],function:Required for anchoring microtubules to the centrosomes. Required for the integrity of the microtubule network. Recruits PPARA to discrete subcellular compartments and thereby modulates PPARA activity.,PTM:Phosphorylated during mitosis.,similarity:Contains 1 CAP-Gly domain.,subcellular location:Associated with mitotic spindles. Nuclear, in discrete foci. Associated with intermediate filaments.,subunit:Part of a ternary complex that contains CEP350, FGFR1OP and MAPRE1. Interacts directly with FGFR1OP via its C-terminus. Interacts with NR1H3, PPARA, PPARD and PPARG.,tissue specificity:Detected in heart, brain, skeletal muscle, testis, placenta, lung, liver, kidney and pancreas.,

Research Area

Image Data



Immunohistochemistry analysis of paraffin-embedded human breast carcinoma, using CEP350 Antibody. The picture on the right is blocked with the synthesized peptide.

Note

For research use only.