

---

## Summary

<b>Production Name</b>	CEP152 Rabbit Polyclonal Antibody
<b>Description</b>	Rabbit Polyclonal Antibody
<b>Host</b>	Rabbit
<b>Application</b>	WB,IHC,ELISA
<b>Reactivity</b>	Human,Mouse

## Performance

<b>Conjugation</b>	Unconjugated
<b>Modification</b>	Unmodified
<b>Isotype</b>	IgG
<b>Clonality</b>	Polyclonal
<b>Form</b>	Liquid
<b>Storage</b>	Store at 4°C short term. Aliquot and store at -20°C long term. Avoid freeze/thaw cycles.
<b>Buffer</b>	Liquid in PBS containing 50% glycerol, 0.5% BSA and 0.02% New type preservative N.
<b>Purification</b>	Affinity purification

## Immunogen

<b>Gene Name</b>	CEP152
<b>Alternative Names</b>	CEP152; KIAA0912; Centrosomal protein of 152 kDa; Cep152
<b>Gene ID</b>	22995.0
<b>SwissProt ID</b>	O94986.The antiserum was produced against synthesized peptide derived from human CEP152. AA range:841-890

## Application

<b>Dilution Ratio</b>	WB 1:500 - 1:2000. IHC 1:100 - 1:300. ELISA: 1:40000..
<b>Molecular Weight</b>	140kD

## Background

---

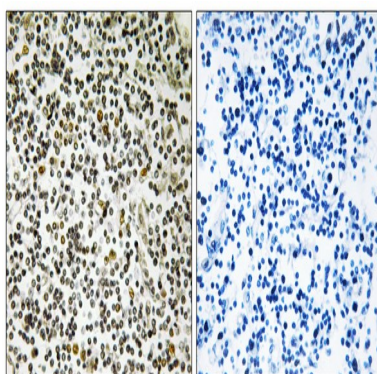
**Product Name: CEP152 Rabbit Polyclonal Antibody**  
**Catalog #: APRab08659**



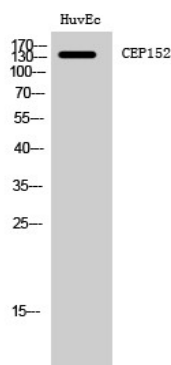
centrosomal protein 152(CEP152) Homo sapiens This gene encodes a protein that is thought to be involved with centrosome function. Mutations in this gene have been associated with primary microcephaly (MCPH4). Alternative splicing results in multiple transcript variants. [provided by RefSeq, Aug 2010],sequence caution:Contaminating sequence. Potential poly-A sequence.,

## Research Area

## Image Data



Immunohistochemistry analysis of paraffin-embedded human lymph node tissue, using CEP152 Antibody. The picture on the right is blocked with the synthesized peptide.



Western Blot analysis of HuvEc cells using CEP152 Polyclonal Antibody

## Note

For research use only.