

Product Name: CEP135 Rabbit Polyclonal Antibody
Catalog #: APRab08658



Summary

Production Name	CEP135 Rabbit Polyclonal Antibody
Description	Rabbit Polyclonal Antibody
Host	Rabbit
Application	WB,IHC
Reactivity	Human,Mouse

Performance

Conjugation	Unconjugated
Modification	Unmodified
Isotype	IgG
Clonality	Polyclonal
Form	Liquid
Storage	Store at 4°C short term. Aliquot and store at -20°C long term. Avoid freeze/thaw cycles.
Buffer	Liquid in PBS containing 50% glycerol, 0.5% BSA and 0.02% New type preservative N.
Purification	Affinity purification

Immunogen

Gene Name	CEP135
Alternative Names	CEP135; CEP4; KIAA0635; Centrosomal protein of 135 kDa; Cep135; Centrosomal protein 4
Gene ID	9662.0
SwissProt ID	Q66GS9.The antiserum was produced against synthesized peptide derived from human CEP135. AA range:1081-1130

Application

Dilution Ratio	WB 1:500 - 1:2000. IHC 1:100 - 1:300. ELISA: 1:40000..
Molecular Weight	134kD

Product Name: CEP135 Rabbit Polyclonal Antibody
Catalog #: APRab08658

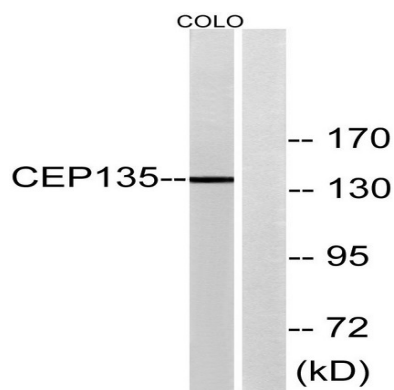


Background

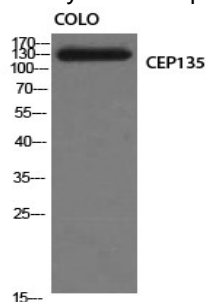
centrosomal protein 135(CEP135) Homo sapiens This gene encodes a centrosomal protein, which acts as a scaffolding protein during early centriole biogenesis, and is also required for centriole-centriole cohesion during interphase. Mutations in this gene are associated with autosomal recessive primary microcephaly-8. [provided by RefSeq, Jun 2012],similarity:Belongs to the CEP135/TSGA10 family.,

Research Area

Image Data

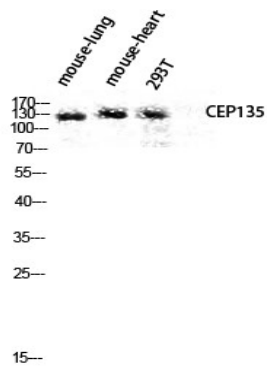


Western blot analysis of lysates from COLO cells, using CEP135 Antibody. The lane on the right is blocked with the synthesized peptide.

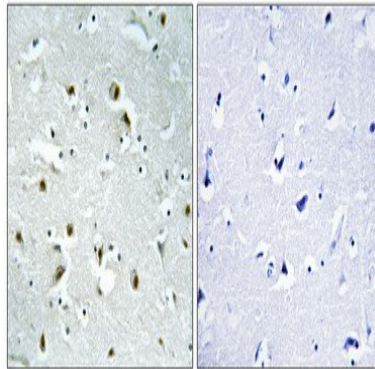


Western Blot analysis of COLO cells using CEP135 Polyclonal Antibody diluted at 1: 1000

Product Name: CEP135 Rabbit Polyclonal Antibody
Catalog #: APRab08658



Western blot analysis of mouse-lung mouse-heart 293T lysis using CEP135 antibody. Antibody was diluted at 1:1000



Immunohistochemical analysis of paraffin-embedded Human brain. Antibody was diluted at 1:100 (4°,overnight) . High-pressure and temperature Tris-EDTA,pH8.0 was used for antigen retrieval. Negative contrl (right) obtaned from antibody was pre-absorbed by immunogen peptide.

Note

For research use only.