
Summary

Production Name	CDYL2 Rabbit Polyclonal Antibody
Description	Rabbit Polyclonal Antibody
Host	Rabbit
Application	IHC, WB, ELISA
Reactivity	Human, Rat, Mouse

Performance

Conjugation	Unconjugated
Modification	Unmodified
Isotype	IgG
Clonality	Polyclonal
Form	Liquid
Storage	Store at 4°C short term. Aliquot and store at -20°C long term. Avoid freeze/thaw cycles.
Buffer	Liquid in PBS containing 50% glycerol, 0.5% BSA and 0.02% New type preservative N.
Purification	Affinity purification

Immunogen

Gene Name	CDYL2
Alternative Names	CDYL2; Chromodomain Y-like protein 2; CDY-like 2
Gene ID	124359.0
SwissProt ID	Q8N8U2. The antiserum was produced against synthesized peptide derived from human CDYL2. AA range:31-80

Application

Dilution Ratio	WB 1:500 - 1:2000. IHC 1:100 - 1:300. ICC: 1:200 - 1:1000. ELISA: 1:20000..
Molecular Weight	56kD

Background

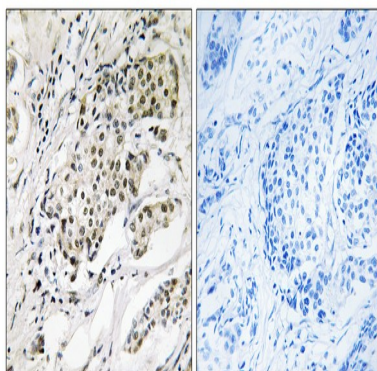
Product Name: CDYL2 Rabbit Polyclonal Antibody
Catalog #: APRab08600



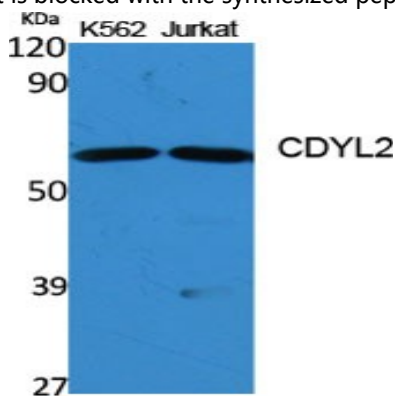
similarity:Contains 1 chromo domain.,tissue specificity:Ubiquitously expressed.,similarity:Contains 1 chromo domain.,tissue specificity:Ubiquitously expressed.,

Research Area

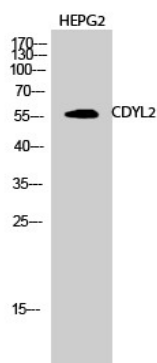
Image Data



Immunohistochemistry analysis of paraffin-embedded human breast carcinoma, using CDYL2 Antibody. The picture on the right is blocked with the synthesized peptide.



Western Blot analysis of various cells using CDYL2 Polyclonal Antibody diluted at 1: 1000 cells nucleus extracted by Minute TM Cytoplasmic and Nuclear Fractionation kit (SC-003, Inventbiotech, MN, USA) .



Product Name: CDYL2 Rabbit Polyclonal Antibody
Catalog #: APRab08600



Western Blot analysis of HEPG2 cells using CDYL2 Polyclonal Antibody diluted at 1: 1000 cells nucleus extracted by Minute
TM Cytoplasmic and Nuclear Fractionation kit (SC-003, Inventbiotech, MN, USA) .

Note

For research use only.