

Product Name: CDR1 Rabbit Polyclonal Antibody
Catalog #: APRab08584



Summary

Production Name	CDR1 Rabbit Polyclonal Antibody
Description	Rabbit Polyclonal Antibody
Host	Rabbit
Application	WB
Reactivity	Human,Rat,Mouse

Performance

Conjugation	Unconjugated
Modification	Unmodified
Isotype	IgG
Clonality	Polyclonal
Form	Liquid
Storage	Store at 4°C short term. Aliquot and store at -20°C long term. Avoid freeze/thaw cycles.
Buffer	Liquid in PBS containing 50% glycerol, and 0.02% New type preservative N.
Purification	Affinity purification

Immunogen

Gene Name	CDR1
Alternative Names	
Gene ID	1038.0
SwissProt ID	P51861.Synthesized peptide derived from part region of human protein

Application

Dilution Ratio	WB 1:500-2000 ELISA 1:5000-20000
Molecular Weight	28kD

Background

cerebellar degeneration related protein 1(CDR1) Homo sapiens Autoantibodies directed against the protein encoded by this intronless gene have been found in some patients with paraneoplastic cerebellar degeneration. The encoded protein

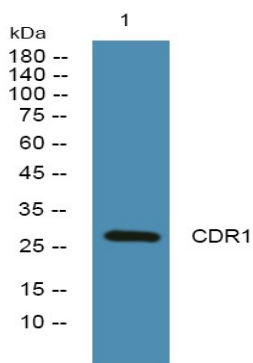
Product Name: CDR1 Rabbit Polyclonal Antibody
Catalog #: APRab08584



contains several hexapeptide repeats. [provided by RefSeq, Jan 2010],disease:CDR1 is one of the target molecules recognized by autoantibodies in patients with paraneoplastic cerebellar degeneration.,sequence caution:Frameshifts in positions 134, 176.,tissue specificity:Brain; predominantly expressed in normal neuroectodermal tissues and in certain malignant tumors.,

Research Area

Image Data



Western blot analysis of lysates from KB cells, primary antibody was diluted at 1:1000, 4°over night

Note

For research use only.