

Product Name: CDO Rabbit Polyclonal Antibody
Catalog #: APRab08582



Summary

Production Name	CDO Rabbit Polyclonal Antibody
Description	Rabbit Polyclonal Antibody
Host	Rabbit
Application	IF,ELISA
Reactivity	Human,Rat,Mouse

Performance

Conjugation	Unconjugated
Modification	Unmodified
Isotype	IgG
Clonality	Polyclonal
Form	Liquid
Storage	Store at 4°C short term. Aliquot and store at -20°C long term. Avoid freeze/thaw cycles.
Buffer	Liquid in PBS containing 50% glycerol, 0.5% BSA and 0.02% New type preservative N.
Purification	Affinity purification

Immunogen

Gene Name	CDON
Alternative Names	CDON; CDO; Cell adhesion molecule-related/down-regulated by oncogenes
Gene ID	50937.0
SwissProt ID	Q4KMG0.The antiserum was produced against synthesized peptide derived from human CDON. AA range:511-560

Application

Dilution Ratio	IF 1:200-1:1000. ELISA: 1:10000.
Molecular Weight	

Background

This gene encodes a cell surface receptor that is a member of the immunoglobulin superfamily. The encoded protein

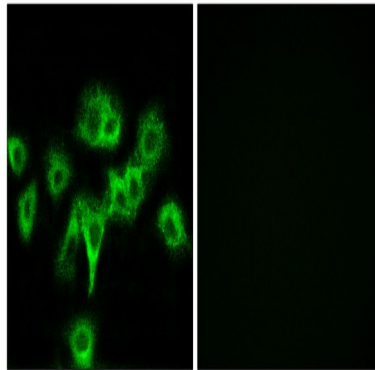
Product Name: CDO Rabbit Polyclonal Antibody
Catalog #: APRab08582



contains three fibronectin type III domains and five immunoglobulin-like C2-type domains. This protein is a member of a cell-surface receptor complex that mediates cell-cell interactions between muscle precursor cells and positively regulates myogenesis. [provided by RefSeq, Aug 2011],function:Component of a cell-surface receptor complex that mediates cell-cell interactions between muscle precursor cells. Promotes differentiation of myogenic cells.,PTM:N-glycosylated.,similarity:Contains 3 fibronectin type-III domains.,similarity:Contains 5 Ig-like C2-type (immunoglobulin-like) domains.,subunit:Part of a complex that contains BOC, CDON, NEO1, cadherins and CTNNB1. Interacts with NTN3.,

Research Area

Image Data



Immunofluorescence analysis of HeLa cells, using CDON Antibody. The picture on the right is blocked with the synthesized peptide.

Note

For research use only.