

Summary

Production Name	CDKN3 Rabbit Polyclonal Antibody
Description	Rabbit Polyclonal Antibody
Host	Rabbit
Application	WB,ELISA
Reactivity	Human,Mouse

Performance

Conjugation	Unconjugated
Modification	Unmodified
Isotype	IgG
Clonality	Polyclonal
Form	Liquid
Storage	Store at 4°C short term. Aliquot and store at -20°C long term. Avoid freeze/thaw cycles.
Buffer	Liquid in PBS containing 50% glycerol, 0.5% BSA and 0.02% New type preservative N.
Purification	Affinity purification

Immunogen

Gene Name	CDKN3
Alternative Names	CDKN3; CDI1; CIP2; KAP; Cyclin-dependent kinase inhibitor 3; CDK2-associated dual-specificity phosphatase; Cyclin-dependent kinase interactor 1; Cyclin-dependent kinase-interacting protein 2; Kinase-associated phosphatase
Gene ID	1033.0
SwissProt ID	Q16667.The antiserum was produced against synthesized peptide derived from human CDKN3. AA range:31-80

Application

Dilution Ratio	WB 1:500 - 1:2000. ELISA: 1:20000
Molecular Weight	23kD

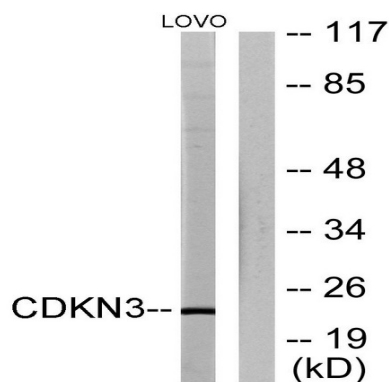
Background

The protein encoded by this gene belongs to the dual specificity protein phosphatase family. It was identified as a cyclin-dependent kinase inhibitor, and has been shown to interact with, and dephosphorylate CDK2 kinase, thus prevent the activation of CDK2 kinase. This gene was reported to be deleted, mutated, or overexpressed in several kinds of cancers. Alternatively spliced transcript variants encoding different isoforms have been found for this gene. [provided by RefSeq, Aug 2008],catalytic activity:A phosphoprotein + H(2)O = a protein + phosphate.,catalytic activity:Protein tyrosine phosphate + H(2)O = protein tyrosine + phosphate.,disease:Defects in CDKN3 are found in patients with hepatocellular carcinoma (HCC) [MIM:114550],.function:May play a role in cell cycle regulation. Dual specificity phosphatase active toward substrates containing either phosphotyrosine or phosphoserine residues. Dephosphorylates CDK2 at 'Thr-160' in a cyclin-dependent manner.,induction:Up-regulated in breast and prostate cancer cells.,similarity:Belongs to the protein-tyrosine phosphatase family.,subunit:Interacts with cyclin-dependent kinases such as CDC2, CDK2 and CDK3. Does not interact with CDK4. Interacts (via C-terminus) with phosphorylated CDK2 (via C-terminal helix). Interacts with MS4A3 (via C-terminus); the interaction enhances CDKN3 enzymatic activity.,

Research Area

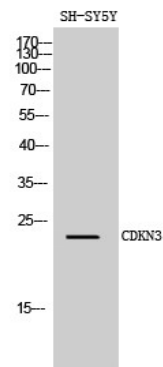
Insulin Receptor

Image Data



Western blot analysis of lysates from LOVO cells, using CDKN3 Antibody. The lane on the right is blocked with the synthesized peptide.

Product Name: CDKN3 Rabbit Polyclonal Antibody
Catalog #: APRab08580



Western Blot analysis of SH-SY5Y cells using CDKN3 Polyclonal Antibody diluted at 1 : 1000

Note

For research use only.