

Summary

Production Name	CDKAL1 Rabbit Polyclonal Antibody
Description	Rabbit Polyclonal Antibody
Host	Rabbit
Application	WB
Reactivity	Human,Rat

Performance

Conjugation	Unconjugated
Modification	Unmodified
Isotype	IgG
Clonality	Polyclonal
Form	Liquid
Storage	Store at 4°C short term. Aliquot and store at -20°C long term. Avoid freeze/thaw cycles.
Buffer	Liquid in PBS containing 50% glycerol, 0.5% BSA and 0.02% New type preservative N.
Purification	Affinity purification

Immunogen

Gene Name	CDKAL1
Alternative Names	CDKAL1; Threonylcarbamoyladenosine tRNA methyltransferase; CDK5 regulatory subunit-associated protein 1-like 1; tRNA-t(6)A37 methyltransferase
Gene ID	54901.0
SwissProt ID	Q5VV42.The antiserum was produced against synthesized peptide derived from human CDKAL. AA range:10-59

Application

Dilution Ratio	WB 1:500-1:2000. ELISA: 1:40000.
Molecular Weight	65kD

Background

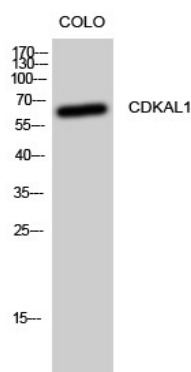
Product Name: CDKAL1 Rabbit Polyclonal Antibody
Catalog #: APRab08575



The protein encoded by this gene is a member of the methylthiotransferase family. The function of this gene is not known. Genome-wide association studies have linked single nucleotide polymorphisms in an intron of this gene with susceptibility to type 2 diabetes. [provided by RefSeq, May 2010], cofactor: Binds 2 4Fe-4S clusters. One cluster is coordinated with 3 cysteines and an exchangeable S-adenosyl-L-methionine., similarity: Belongs to the methylthiotransferase family. CDKAL1 subfamily., similarity: Contains 1 MTTase N-terminal domain., similarity: Contains 1 TRAM domain.,

Research Area

Image Data



Western Blot analysis of CoLo cells using CDKAL1 Polyclonal Antibody

Note

For research use only.