

Summary

Production Name	Cdk6 Rabbit Polyclonal Antibody
Description	Rabbit Polyclonal Antibody
Host	Rabbit
Application	WB,IHC,ELISA
Reactivity	Human,Rat,Mouse

Performance

Conjugation	Unconjugated
Modification	Unmodified
Isotype	IgG
Clonality	Polyclonal
Form	Liquid
Storage	Store at 4°C short term. Aliquot and store at -20°C long term. Avoid freeze/thaw cycles.
Buffer	Liquid in PBS containing 50% glycerol, 0.5% BSA and 0.02% New type preservative N.
Purification	Affinity purification

Immunogen

Gene Name	CDK6 CDKN6
Alternative Names	Cyclin-dependent kinase 6 (EC 2.7.11.22;Cell division protein kinase 6;Serine/threonine-protein kinase PLSTIRE)
Gene ID	1021.0
SwissProt ID	Q00534.Synthetic peptide from human protein at AA range: 280-325

Application

Dilution Ratio	WB 1:500-2000,IHC 1:500-200, ELISA 1:10000-20000.
Molecular Weight	34kD

Background

Product Name: Cdk6 Rabbit Polyclonal Antibody
Catalog #: APRab08569

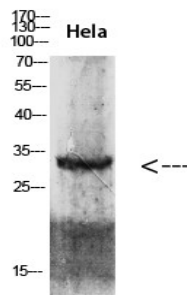


cyclin dependent kinase 6(CDK6) Homo sapiens The protein encoded by this gene is a member of the cyclin-dependent protein kinase (CDK) family. CDK family members are highly similar to the gene products of *Saccharomyces cerevisiae* cdc28, and *Schizosaccharomyces pombe* cdc2, and are known to be important regulators of cell cycle progression. This kinase is a catalytic subunit of the protein kinase complex that is important for cell cycle G1 phase progression and G1/S transition. The activity of this kinase first appears in mid-G1 phase, which is controlled by the regulatory subunits including D-type cyclins and members of INK4 family of CDK inhibitors. This kinase, as well as CDK4, has been shown to phosphorylate, and thus regulate the activity of, tumor suppressor protein Rb. Expression of this gene is up-regulated in some types of cancer. Multiple alternatively spliced variants, encoding the same protein, have been identified. [provided by RefSeq] catalytic activity:ATP + a protein = ADP + a phosphoprotein.,function:Probably involved in the control of the cell cycle. Interacts with D-type G1 cyclins.,polymorphism:Genetic variations in CDK6 influences stature as a quantitative trait type 11 (STQTL11) [MIM:612223]. Adult height is an easily observable and highly heritable complex continuous trait. Because of this, it is a model trait for studying genetic influence on quantitative traits.,similarity:Belongs to the protein kinase superfamily.,similarity:Belongs to the protein kinase superfamily. CMGC Ser/Thr protein kinase family. CDC2/CDKX subfamily.,similarity:Contains 1 protein kinase domain.,

Research Area

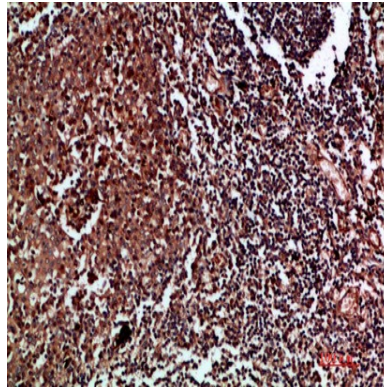
Cell_Cycle_G1S;Cell_Cycle_G2M_DNA;p53;Pathways in cancer;Pancreatic cancer;Glioma;Melanoma;Chronic myeloid leukemia;Small cell lung cancer;Non-small cell lung cancer;

Image Data

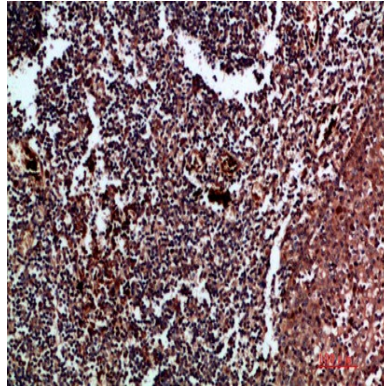


Western blot analysis of 293T HeLa lysate, antibody was diluted at 2000. Secondary antibody was diluted at 1:20000

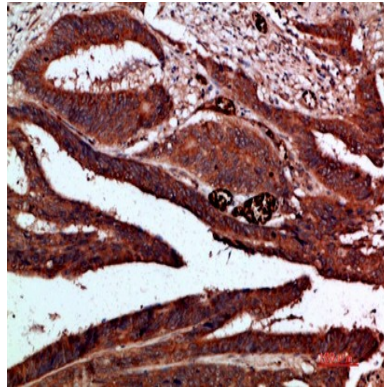
Product Name: Cdk6 Rabbit Polyclonal Antibody
Catalog #: APRab08569



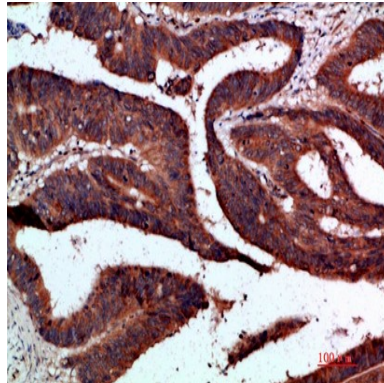
Immunohistochemical analysis of paraffin-embedded human-tonsil, antibody was diluted at 1:200



Immunohistochemical analysis of paraffin-embedded human-tonsil, antibody was diluted at 1:200



Immunohistochemical analysis of paraffin-embedded human-colon-cancer, antibody was diluted at 1:200



Product Name: Cdk6 Rabbit Polyclonal Antibody
Catalog #: APRab08569



Immunohistochemical analysis of paraffin-embedded human-colon-cancer, antibody was diluted at 1:200

Note

For research use only.