

Product Name: CDK5 Activator-binding C42 Rabbit Polyclonal Antibody
Catalog #: APRab08565

Summary

Production Name	CDK5 Activator-binding C42 Rabbit Polyclonal Antibody
Description	Rabbit Polyclonal Antibody
Host	Rabbit
Application	IHC,ELISA
Reactivity	Human,Rat,Mouse

Performance

Conjugation	Unconjugated
Modification	Unmodified
Isotype	IgG
Clonality	Polyclonal
Form	Liquid
Storage	Store at 4°C short term. Aliquot and store at -20°C long term. Avoid freeze/thaw cycles.
Buffer	Liquid in PBS containing 50% glycerol, 0.5% BSA and 0.02% New type preservative N.
Purification	Affinity purification

Immunogen

Gene Name	CDK5RAP1
Alternative Names	CDK5RAP1; C20orf34; CGI-05; HSPC167; CDK5 regulatory subunit-associated protein 1; CDK5 activator-binding protein C42
Gene ID	51654.0
SwissProt ID	Q96SZ6.The antiserum was produced against synthesized peptide derived from human CDK5RAP1. AA range:251-300

Application

Dilution Ratio	IHC 1:100-1:300 ELISA: 1:20000
Molecular Weight	

**Product Name: CDK5 Activator-binding C42 Rabbit
Polyclonal Antibody
Catalog #: APRab08565**

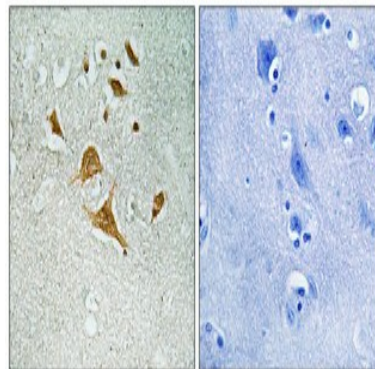


Background

This gene encodes a regulator of cyclin-dependent kinase 5 activity. This protein has also been reported to modify RNA by adding a methylthio-group and may thus have a dual function as an RNA methylthiotransferase and as an inhibitor of cyclin-dependent kinase 5 activity. Alternative splicing results in multiple transcript variants that encode different isoforms. [provided by RefSeq, May 2013],cofactor: Binds 2 4Fe-4S clusters. One cluster is coordinated with 3 cysteines and an exchangeable S-adenosyl-L-methionine.,function: Specifically inhibits CDK5 activation by CDK5R1.,sequence caution: Translated as Glu.,similarity: Belongs to the methylthiotransferase family. MiaB subfamily.,similarity: Contains 1 MTTase N-terminal domain.,similarity: Contains 1 TRAM domain.,subunit: Interacts with CDK5R1 (p35 form). CDK5RAP1, CDK5RAP2 and CDK5RAP3 show competitive binding to CDK5R1. Forms a complex with CDK5R1 and CDK5.,tissue specificity: Widely expressed. Expressed in heart, brain, placenta, lung, liver, skeletal muscle, kidney and pancreas.,

Research Area

Image Data



Immunohistochemical analysis of paraffin-embedded Human brain. Antibody was diluted at 1:100 (4°,overnight) . High-pressure and temperature Tris-EDTA,pH8.0 was used for antigen retrieval. Negative contrl (right) obtained from antibody was pre-absorbed by immunogen peptide.

Note

For research use only.