

Product Name: Cdk10 Rabbit Polyclonal Antibody
Catalog #: APRab08548



Summary

Production Name	Cdk10 Rabbit Polyclonal Antibody
Description	Rabbit Polyclonal Antibody
Host	Rabbit
Application	WB,ELISA
Reactivity	Human,Mouse,Rat

Performance

Conjugation	Unconjugated
Modification	Unmodified
Isotype	IgG
Clonality	Polyclonal
Form	Liquid
Storage	Store at 4°C short term. Aliquot and store at -20°C long term. Avoid freeze/thaw cycles.
Buffer	Liquid in PBS containing 50% glycerol, 0.5% BSA and 0.02% New type preservative N.
Purification	Affinity purification

Immunogen

Gene Name	CDK10
Alternative Names	CDK10; Cyclin-dependent kinase 10; Cell division protein kinase 10; Serine/threonine-protein kinase PISSLRE
Gene ID	8558.0
SwissProt ID	Q15131.The antiserum was produced against synthesized peptide derived from human CDK10. AA range:51-100

Application

Dilution Ratio	WB 1:500 - 1:2000. ELISA: 1:10000..
Molecular Weight	43kD

Product Name: Cdk10 Rabbit Polyclonal Antibody
Catalog #: APRab08548

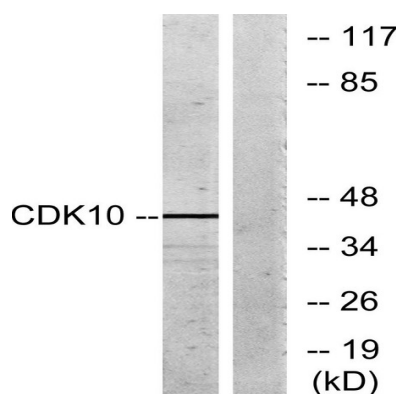


Background

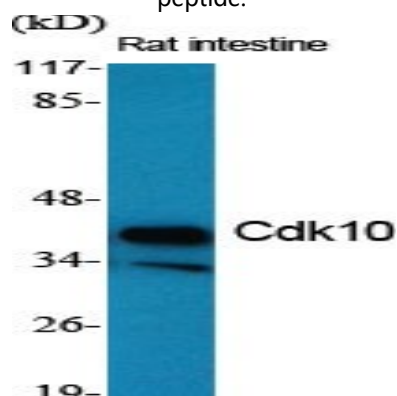
The protein encoded by this gene belongs to the CDK subfamily of the Ser/Thr protein kinase family. The CDK subfamily members are highly similar to the gene products of *S. cerevisiae* cdc28, and *S. pombe* cdc2, and are known to be essential for cell cycle progression. This kinase has been shown to play a role in cellular proliferation and its function is limited to cell cycle G2-M phase. Multiple transcript variants encoding different isoforms have been found for this gene. [provided by RefSeq, May 2009], catalytic activity: ATP + a protein = ADP + a phosphoprotein., similarity: Belongs to the protein kinase superfamily., similarity: Belongs to the protein kinase superfamily. CMGC Ser/Thr protein kinase family. CDC2/CDKX subfamily., similarity: Contains 1 protein kinase domain.,

Research Area

Image Data

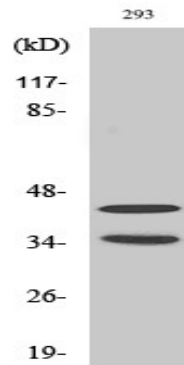


Western blot analysis of lysates from 293 cells, using CDK10 Antibody. The lane on the right is blocked with the synthesized peptide.



Western Blot analysis of various cells using Cdk10 Polyclonal Antibody diluted at 1: 500

Product Name: Cdk10 Rabbit Polyclonal Antibody
Catalog #: APRab08548



Western Blot analysis of 293 cells using Cdk10 Polyclonal Antibody diluted at 1: 500

Note

For research use only.