

Product Name: CdcA7 Rabbit Polyclonal Antibody
Catalog #: APRab08535



Summary

Production Name	CdcA7 Rabbit Polyclonal Antibody
Description	Rabbit Polyclonal Antibody
Host	Rabbit
Application	WB
Reactivity	Human,Mouse,Rat

Performance

Conjugation	Unconjugated
Modification	Unmodified
Isotype	IgG
Clonality	Polyclonal
Form	Liquid
Storage	Store at 4°C short term. Aliquot and store at -20°C long term. Avoid freeze/thaw cycles.
Buffer	Liquid in PBS containing 50% glycerol, 0.5% BSA and 0.02% New type preservative N.
Purification	Affinity purification

Immunogen

Gene Name	CDCA7
Alternative Names	CDCA7; JPO1; Cell division cycle-associated protein 7; Protein JPO1
Gene ID	83879.0
SwissProt ID	Q9BWT1.The antiserum was produced against synthesized peptide derived from human CDCA7. AA range:141-190

Application

Dilution Ratio	WB 1:500-1:2000. ELISA: 1:20000.
Molecular Weight	43kD

Background

cell division cycle associated 7(CDCA7) Homo sapiens This gene was identified as a c-Myc responsive gene, and behaves

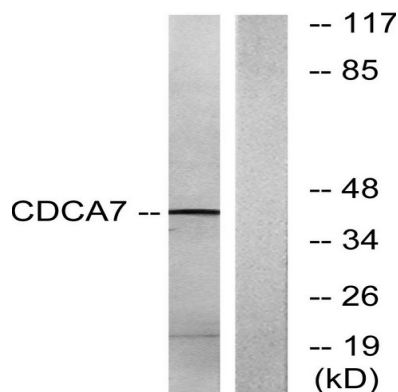
Product Name: CdcA7 Rabbit Polyclonal Antibody
Catalog #: APRab08535



as a direct c-Myc target gene. Overexpression of this gene is found to enhance the transformation of lymphoblastoid cells, and it complements a transformation-defective Myc Box II mutant, suggesting its involvement in c-Myc-mediated cell transformation. Two alternatively spliced transcript variants encoding distinct isoforms have been reported. [provided by RefSeq, Jul 2008],function:Participates in MYC-mediated cell transformation; induces anchorage-independent growth and clonogenicity in lymphoblastoid cells. Insufficient to induce tumorigenicity when overexpressed but contributes to MYC-mediated tumorigenesis. May play a role as transcriptional regulator.,induction:Activated by MYC and possibly E2F1.,miscellaneous:CDCA7 expression is correlated with MYC expression in lymphoblastoid, lymphoma and breast cancer cell lines.,tissue specificity:Ubiquitous with higher level in thymus and small intestine. Overexpressed in a large number of tumors, in blood from patients with acute myelogenous leukemia (AML) and in chronic myelogenous leukemia (CML) blast crisis.,

Research Area

Image Data



Western blot analysis of lysates from K562 cells, using CDCA7 Antibody. The lane on the right is blocked with the synthesized peptide.

Note

For research use only.