

Summary

Production Name	CdcA3 Rabbit Polyclonal Antibody
Description	Rabbit Polyclonal Antibody
Host	Rabbit
Application	IHC,WB,ELISA
Reactivity	Human,Mouse,Rat

Performance

Conjugation	Unconjugated
Modification	Unmodified
Isotype	IgG
Clonality	Polyclonal
Form	Liquid
Storage	Store at 4°C short term. Aliquot and store at -20°C long term. Avoid freeze/thaw cycles.
Buffer	Liquid in PBS containing 50% glycerol, 0.5% BSA and 0.02% New type preservative N.
Purification	Affinity purification

Immunogen

Gene Name	CDCA3
Alternative Names	CDCA3; C8; GRCC8; TOME1; Cell division cycle-associated protein 3; Gene-rich cluster protein C8; Trigger of mitotic entry protein 1; TOME-1
Gene ID	83461.0
SwissProt ID	Q99618.The antiserum was produced against synthesized peptide derived from human CDCA3. AA range:219-268

Application

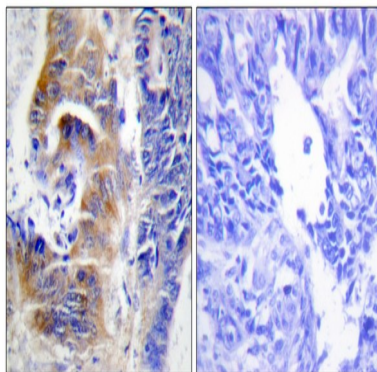
Dilution Ratio	WB 1:500 - 1:2000. IHC 1:100 - 1:300. . ELISA: 1:5000. Not yet tested in other applications.
Molecular Weight	28kD

Background

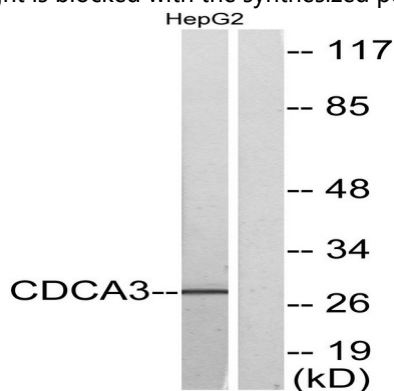
domain:The KEN box is required for the association with the APC/C-Cdh1 complex.,function:F-box-like protein which is required for entry into mitosis. Acts by participating to E3 ligase complexes that mediate the ubiquitination and degradation of WEE1 kinase at G2/M phase.,pathway:Protein modification; protein ubiquitination.,PTM:Phosphorylated upon DNA damage, probably by ATM or ATR.,PTM:Ubiquitinated and degraded by the APC/C-Cdh1 complex.,subunit:Interacts with SKP1A. Part of a SCF (SKP1-cullin-F-box) protein ligase complex.,domain:The KEN box is required for the association with the APC/C-Cdh1 complex.,function:F-box-like protein which is required for entry into mitosis. Acts by participating to E3 ligase complexes that mediate the ubiquitination and degradation of WEE1 kinase at G2/M phase.,pathway:Protein modification; protein ubiquitination.,PTM:Phosphorylated upon DNA damage, probably by ATM or ATR.,PTM:Ubiquitinated and degraded by the APC/C-Cdh1 complex.,subunit:Interacts with SKP1A. Part of a SCF (SKP1-cullin-F-box) protein ligase complex.,

Research Area

Image Data



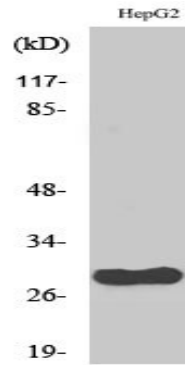
Immunohistochemistry analysis of paraffin-embedded human colon carcinoma tissue, using CDCA3 Antibody. The picture on the right is blocked with the synthesized peptide.



Product Name: CdcA3 Rabbit Polyclonal Antibody
Catalog #: APRab08532



Western blot analysis of lysates from HepG2 cells, using CDCA3 Antibody. The lane on the right is blocked with the synthesized peptide.



Western Blot analysis of various cells using CdcA3 Polyclonal Antibody

Note

For research use only.