

**Product Name: Cdc7 Rabbit Polyclonal Antibody**  
**Catalog #: APRab08531**



## Summary

<b>Production Name</b>	Cdc7 Rabbit Polyclonal Antibody
<b>Description</b>	Rabbit Polyclonal Antibody
<b>Host</b>	Rabbit
<b>Application</b>	WB,IHC,ELISA
<b>Reactivity</b>	Human,Rat,Mouse

## Performance

<b>Conjugation</b>	Unconjugated
<b>Modification</b>	Unmodified
<b>Isotype</b>	IgG
<b>Clonality</b>	Polyclonal
<b>Form</b>	Liquid
<b>Storage</b>	Store at 4°C short term. Aliquot and store at -20°C long term. Avoid freeze/thaw cycles.
<b>Buffer</b>	Liquid in PBS containing 50% glycerol, 0.5% BSA and 0.02% New type preservative N.
<b>Purification</b>	Affinity purification

## Immunogen

<b>Gene Name</b>	CDC7
<b>Alternative Names</b>	CDC7; CDC7L1; Cell division cycle 7-related protein kinase; CDC7-related kinase; HsCdc7; huCdc7
<b>Gene ID</b>	8317.0
<b>SwissProt ID</b>	O00311.The antiserum was produced against synthesized peptide derived from human CDC7. AA range:1-50

## Application

<b>Dilution Ratio</b>	WB 1:500 - 1:2000. IHC 1:100 - 1:300. ELISA: 1:5000..
<b>Molecular Weight</b>	70kD

**Product Name: Cdc7 Rabbit Polyclonal Antibody**  
**Catalog #: APRab08531**



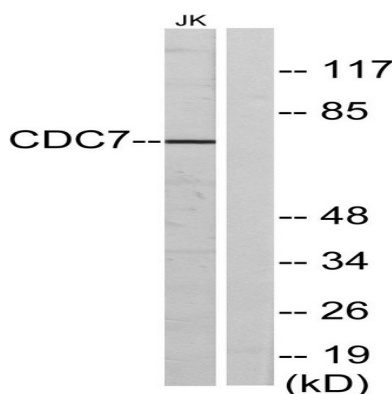
## Background

This gene encodes a cell division cycle protein with kinase activity that is critical for the G1/S transition. The yeast homolog is also essential for initiation of DNA replication as cell division occurs. Overexpression of this gene product may be associated with neoplastic transformation for some tumors. Multiple alternatively spliced transcript variants that encode the same protein have been detected. [provided by RefSeq, Aug 2008],alternative products:A number of isoforms may be produced,catalytic activity:ATP + a protein = ADP + a phosphoprotein.,cofactor:Magnesium.,function:Seems to phosphorylate critical substrates that regulate the G1/S phase transition and/or DNA replication. Can phosphorylates MCM2 and MCM3.,similarity:Belongs to the protein kinase superfamily.,similarity:Belongs to the protein kinase superfamily. Ser/Thr protein kinase family. CDC7 subfamily.,similarity:Contains 1 protein kinase domain.,subunit:Forms a complex with either DBF4/DBF4A or DBF4B, leading to the activation of the kinase activity.,

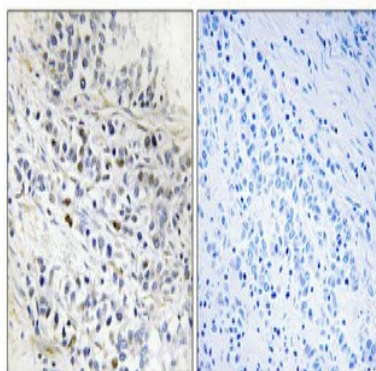
## Research Area

Cell\_Cycle\_G1S;Cell\_Cycle\_G2M\_DNA;

## Image Data



Western blot analysis of lysates from Jurkat cells, using CDC7 Antibody. The lane on the right is blocked with the synthesized peptide.



Immunohistochemical analysis of paraffin-embedded Human lung cancer. Antibody was diluted at 1:100 (4°,overnight) . High-pressure and temperature Tris-EDTA,pH8.0 was used for antigen retrieval. Negetive contrl (right) obtaned from

**Product Name: Cdc7 Rabbit Polyclonal Antibody**  
**Catalog #: APRab08531**



---

antibody was pre-absorbed by immunogen peptide.

**Note**

For research use only.