

**Product Name: Cdc50C Rabbit Polyclonal Antibody**  
**Catalog #: APRab08526**



## Summary

<b>Production Name</b>	Cdc50C Rabbit Polyclonal Antibody
<b>Description</b>	Rabbit Polyclonal Antibody
<b>Host</b>	Rabbit
<b>Application</b>	IF,ELISA
<b>Reactivity</b>	Human,Rat,Mouse

## Performance

<b>Conjugation</b>	Unconjugated
<b>Modification</b>	Unmodified
<b>Isotype</b>	IgG
<b>Clonality</b>	Polyclonal
<b>Form</b>	Liquid
<b>Storage</b>	Store at 4°C short term. Aliquot and store at -20°C long term. Avoid freeze/thaw cycles.
<b>Buffer</b>	Liquid in PBS containing 50% glycerol, 0.5% BSA and 0.02% New type preservative N.
<b>Purification</b>	Affinity purification

## Immunogen

<b>Gene Name</b>	TMEM30C
<b>Alternative Names</b>	TMEM30C; CDC50C; Cell cycle control protein 50C; Transmembrane protein 30C
<b>Gene ID</b>	288175.0
<b>SwissProt ID</b>	A0ZSE6.The antiserum was produced against synthesized peptide derived from human TMEM30C. AA range:51-100

## Application

<b>Dilution Ratio</b>	IF 1:200-1:1000. ELISA: 1:20000.
<b>Molecular Weight</b>	

## Background

TMEM30C, also named as CDC50C, belongs to the CDC50/LEM3 family. TMEM30C is specifically expressed in testis.

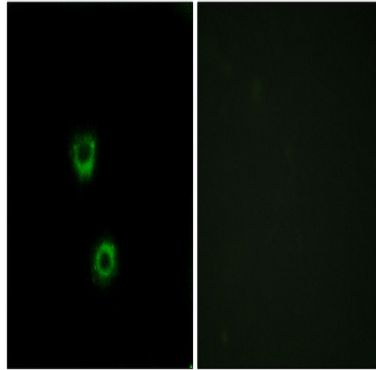
**Product Name: Cdc50C Rabbit Polyclonal Antibody**  
**Catalog #: APRab08526**



---

## Research Area

## Image Data



Immunofluorescence analysis of MCF7 cells, using TMEM30C Antibody. The picture on the right is blocked with the synthesized peptide.

## Note

For research use only.