

Product Name: Cdc42EP5 Rabbit Polyclonal Antibody
Catalog #: APRab08522



Summary

| | |
|------------------------|-------------------------------------|
| Production Name | Cdc42EP5 Rabbit Polyclonal Antibody |
| Description | Rabbit Polyclonal Antibody |
| Host | Rabbit |
| Application | WB,IHC,ELISA |
| Reactivity | Human,Mouse |

Performance

| | |
|---------------------|--|
| Conjugation | Unconjugated |
| Modification | Unmodified |
| Isotype | IgG |
| Clonality | Polyclonal |
| Form | Liquid |
| Storage | Store at 4°C short term. Aliquot and store at -20°C long term. Avoid freeze/thaw cycles. |
| Buffer | Liquid in PBS containing 50% glycerol, 0.5% BSA and 0.02% New type preservative N. |
| Purification | Affinity purification |

Immunogen

| | |
|--------------------------|---|
| Gene Name | CDC42EP5 |
| Alternative Names | CDC42EP5; BORG3; CEP5; Cdc42 effector protein 5; Binder of Rho GTPases 3 |
| Gene ID | 148170.0 |
| SwissProt ID | Q6NZY7.The antiserum was produced against synthesized peptide derived from human BORG3. AA range:1-50 |

Application

| | |
|-------------------------|--|
| Dilution Ratio | WB 1:500 - 1:2000. IHC 1:100 - 1:300. ELISA: 1:40000.. |
| Molecular Weight | 22kD |

Background

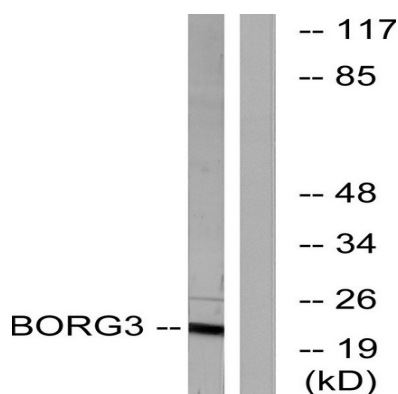
Product Name: Cdc42EP5 Rabbit Polyclonal Antibody
Catalog #: APRab08522



Cell division control protein 42 (CDC42), a small Rho GTPase, regulates the formation of F-actin-containing structures through its interaction with the downstream effector proteins. The protein encoded by this gene is a member of the Borg (binder of Rho GTPases) family of CDC42 effector proteins. Borg family proteins contain a CRIB (Cdc42/Rac interactive-binding) domain. They bind to CDC42 and regulate its function negatively. The encoded protein may inhibit c-Jun N-terminal kinase (JNK) independently of CDC42 binding. The protein may also play a role in septin organization and inducing pseudopodia formation in fibroblasts [provided by RefSeq, Jul 2013],domain:The CRIB domain mediates interaction with CDC42.,function:Probably involved in the organization of the actin cytoskeleton. May act downstream of CDC42 to induce actin filament assembly leading to cell shape changes. Induces pseudopodia formation in fibroblasts. Inhibits MAPK8 independently of CDC42 binding. Controls septin organization and this effect is negatively regulated by CDC42.,similarity:Belongs to the BORG/CEP family.,similarity:Contains 1 CRIB domain.,subunit:Interacts with CDC42, in a GTP-dependent manner, and with SEPT7.,

Research Area

Image Data

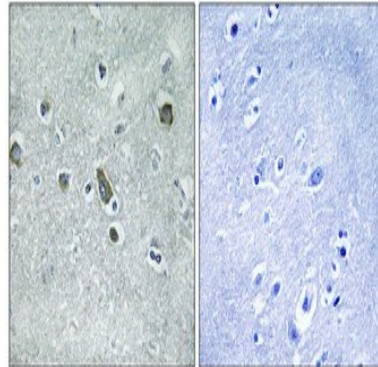


Western blot analysis of lysates from Jurkat cells, using BORG3 Antibody. The lane on the right is blocked with the synthesized peptide.



Western Blot analysis of various cells using Cdc42EP5 Polyclonal Antibody diluted at 1: 500

Product Name: Cdc42EP5 Rabbit Polyclonal Antibody
Catalog #: APRab08522



Immunohistochemical analysis of paraffin-embedded Human brain. Antibody was diluted at 1:100 (4°,overnight) . High-pressure and temperature Tris-EDTA,pH8.0 was used for antigen retrieval. Negative contrl (right) obtaned from antibody was pre-absorbed by immunogen peptide.

Note

For research use only.