

Product Name: Cdc42EP4 Rabbit Polyclonal Antibody
Catalog #: APRab08521



Summary

Production Name	Cdc42EP4 Rabbit Polyclonal Antibody
Description	Rabbit Polyclonal Antibody
Host	Rabbit
Application	WB
Reactivity	Human,Rat,Mouse

Performance

Conjugation	Unconjugated
Modification	Unmodified
Isotype	IgG
Clonality	Polyclonal
Form	Liquid
Storage	Store at 4°C short term. Aliquot and store at -20°C long term. Avoid freeze/thaw cycles.
Buffer	Liquid in PBS containing 50% glycerol, 0.5% BSA and 0.02% New type preservative N.
Purification	Affinity purification

Immunogen

Gene Name	CDC42EP4
Alternative Names	CDC42EP4; BORG4; CEP4; Cdc42 effector protein 4; Binder of Rho GTPases 4
Gene ID	23580.0
SwissProt ID	Q9H3Q1.The antiserum was produced against synthesized peptide derived from human BORG4. AA range:201-250

Application

Dilution Ratio	WB 1:500-1:2000. ELISA: 1:20000.
Molecular Weight	36kD

Background

The product of this gene is a member of the CDC42-binding protein family. Members of this family interact with Rho family

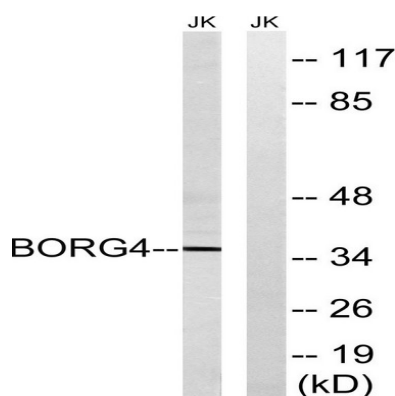
Product Name: Cdc42EP4 Rabbit Polyclonal Antibody
Catalog #: APRab08521



GTPases and regulate the organization of the actin cytoskeleton. This protein has been shown to bind both CDC42 and TC10 GTPases in a GTP-dependent manner. When overexpressed in fibroblasts, this protein was able to induce pseudopodia formation, which suggested a role in inducing actin filament assembly and cell shape control. [provided by RefSeq, Jul 2008],function:Probably involved in the organization of the actin cytoskeleton. May act downstream of CDC42 to induce actin filament assembly leading to cell shape changes. Induces pseudopodia formation, when overexpressed in fibroblasts.,similarity:Belongs to the BORG/CEP family.,similarity:Contains 1 CRIB domain.,subunit:Interacts with CDC42 and RHOQ, in a GTP-dependent manner.,tissue specificity:Not detected in any of the adult tissues tested. May be expressed only in fetal or embryonic tissues.,

Research Area

Image Data



Western blot analysis of lysates from Jurkat cells, using BORG4 Antibody. The lane on the right is blocked with the synthesized peptide.

Note

For research use only.