

Product Name: Cdc42EP3 Rabbit Polyclonal Antibody
Catalog #: APRab08520



Summary

Production Name	Cdc42EP3 Rabbit Polyclonal Antibody
Description	Rabbit Polyclonal Antibody
Host	Rabbit
Application	WB
Reactivity	Human,Mouse,Rat

Performance

Conjugation	Unconjugated
Modification	Unmodified
Isotype	IgG
Clonality	Polyclonal
Form	Liquid
Storage	Store at 4°C short term. Aliquot and store at -20°C long term. Avoid freeze/thaw cycles.
Buffer	Liquid in PBS containing 50% glycerol, 0.5% BSA and 0.02% New type preservative N.
Purification	Affinity purification

Immunogen

Gene Name	CDC42EP3
Alternative Names	CDC42EP3; BORG2; CEP3; Cdc42 effector protein 3; Binder of Rho GTPases 2; MSE55-related Cdc42-binding protein
Gene ID	10602.0
SwissProt ID	Q9UKI2.Synthesized peptide derived from the N-terminal region of human Cdc42EP3.

Application

Dilution Ratio	WB 1:500-1:2000. ELISA: 1:40000.
Molecular Weight	26kD

Background

This gene encodes a member of a small family of guanosine triphosphate (GTP) metabolizing proteins that contain a CRIB

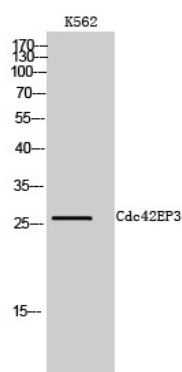
Product Name: Cdc42EP3 Rabbit Polyclonal Antibody
Catalog #: APRab08520



(Cdc42, Rac interactive binding) domain. Members of this family of proteins act as effectors of CDC42 function. The encoded protein is involved in actin cytoskeleton re-organization during cell shape changes, including pseudopodia formation. A pseudogene of this gene is found on chromosome 19. Alternative splicing results in multiple transcript variants. [provided by RefSeq, Jul 2012],function:Probably involved in the organization of the actin cytoskeleton. May act downstream of CDC42 to induce actin filament assembly leading to cell shape changes. Induces pseudopodia formation in fibroblasts.,similarity:Belongs to the BORG/CEP family.,similarity:Contains 1 CRIB domain.,subunit:Interacts with RHOQ and CDC42, in a GTP-dependent manner, and with SEPT7.,tissue specificity:Highly expressed in the heart and weakly in the brain.,

Research Area

Image Data



Western Blot analysis of K562 cells using Cdc42EP3 Polyclonal Antibody

Note

For research use only.