

## Summary

|                        |                                  |
|------------------------|----------------------------------|
| <b>Production Name</b> | Cdc37 Rabbit Polyclonal Antibody |
| <b>Description</b>     | Rabbit Polyclonal Antibody       |
| <b>Host</b>            | Rabbit                           |
| <b>Application</b>     | IF,IHC,WB,ELISA                  |
| <b>Reactivity</b>      | Human,Mouse,Rat,Monkey           |

## Performance

|                     |  |
|---------------------|--|
| <b>Conjugation</b>  | Unconjugated   |
| <b>Modification</b> | Unmodified   |
| <b>Isotype</b>      | IgG  |
| <b>Clonality</b>    | Polyclonal   |
| <b>Form</b>         | Liquid   |
| <b>Storage</b>      | Store at 4°C short term. Aliquot and store at -20°C long term. Avoid freeze/thaw cycles. |
| <b>Buffer</b>       | Liquid in PBS containing 50% glycerol, 0.5% BSA and 0.02% New type preservative N.       |
| <b>Purification</b> | Affinity purification  |

## Immunogen

|                          |   |
|--------------------------|---|
| <b>Gene Name</b>         | CDC37   |
| <b>Alternative Names</b> | CDC37; CDC37A; Hsp90 co-chaperone Cdc37; Hsp90 chaperone protein kinase-targeting subunit; p50Cdc37   |
| <b>Gene ID</b>           | 11140.0   |
| <b>SwissProt ID</b>      | Q16543.The antiserum was produced against synthesized peptide derived from human CDC37. AA range:1-50 |

## Application

|                         |  |
|-------------------------|--|
| <b>Dilution Ratio</b>   | WB 1:500 - 1:2000. IHC 1:100 - 1:300. IF 1:200 - 1:1000. ELISA: 1:20000. Not yet tested in other applications. |
| <b>Molecular Weight</b> | 44kD   |

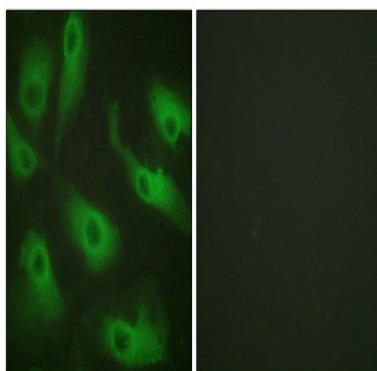
## Background

The protein encoded by this gene is highly similar to Cdc 37, a cell division cycle control protein of *Saccharomyces cerevisiae*. This protein is a molecular chaperone with specific function in cell signal transduction. It has been shown to form complex with Hsp90 and a variety of protein kinases including CDK4, CDK6, SRC, RAF-1, MOK, as well as eIF2 alpha kinases. It is thought to play a critical role in directing Hsp90 to its target kinases. [provided by RefSeq, Jul 2008],function:Co-chaperone that binds to numerous kinases and promotes their interaction with the Hsp90 complex, resulting in stabilization and promotion of their activity.,PTM:Constitutively sumoylated by UBE21.,similarity:Belongs to the CDC37 family.,subunit:Forms a complex with Hsp90. Interacts with AR, CDK4, CDK6, EIF2AK1 and RB1.,

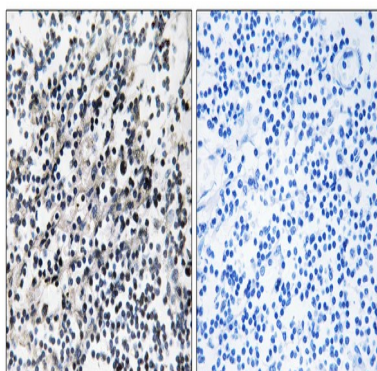
## Research Area

PI3K/Akt

## Image Data

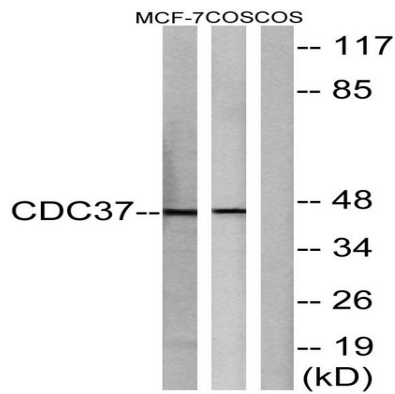


Immunofluorescence analysis of HeLa cells, using CDC37 Antibody. The picture on the right is blocked with the synthesized peptide.

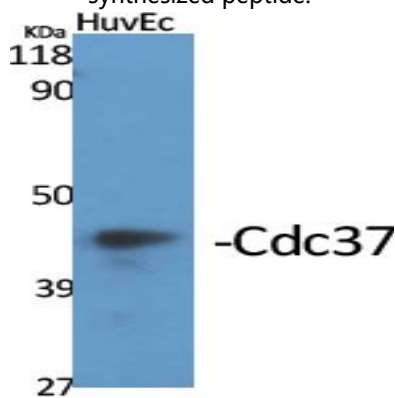


Immunohistochemistry analysis of paraffin-embedded human placenta tissue, using CDC37 Antibody. The picture on the right is blocked with the synthesized peptide.

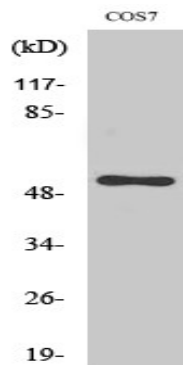
**Product Name: Cdc37 Rabbit Polyclonal Antibody**  
**Catalog #: APRab08514**



Western blot analysis of lysates from MCF-7 and COS7 cells, using CDC37 Antibody. The lane on the right is blocked with the synthesized peptide.



Western Blot analysis of various cells using Cdc37 Polyclonal Antibody



Western Blot analysis of MCF7 cells using Cdc37 Polyclonal Antibody

## Note

For research use only.