
Summary

Production Name	Cdc23 Rabbit Polyclonal Antibody
Description	Rabbit Polyclonal Antibody
Host	Rabbit
Application	WB,ELISA
Reactivity	Human,Mouse,Monkey

Performance

Conjugation	Unconjugated
Modification	Unmodified
Isotype	IgG
Clonality	Polyclonal
Form	Liquid
Storage	Store at 4°C short term. Aliquot and store at -20°C long term. Avoid freeze/thaw cycles.
Buffer	Liquid in PBS containing 50% glycerol, 0.5% BSA and 0.02% New type preservative N.
Purification	Affinity purification

Immunogen

Gene Name	CDC23
Alternative Names	CDC23; ANAPC8; Cell division cycle protein 23 homolog; Anaphase-promoting complex subunit 8; APC8; Cyclosome subunit 8
Gene ID	8697.0
SwissProt ID	Q9UJX2.The antiserum was produced against synthesized peptide derived from human APC8. AA range:251-300

Application

Dilution Ratio	WB 1:500 - 1:2000. ELISA: 1:20000
Molecular Weight	69kD

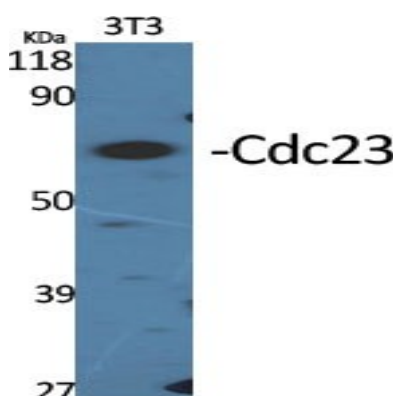
Background

The protein encoded by this gene shares strong similarity with *Saccharomyces cerevisiae* Cdc23, a protein essential for cell cycle progression through the G2/M transition. This protein is a component of anaphase-promoting complex (APC), which is composed of eight protein subunits and highly conserved in eukaryotic cells. APC catalyzes the formation of cyclin B-ubiquitin conjugate that is responsible for the ubiquitin-mediated proteolysis of B-type cyclins. This protein and 3 other members of the APC complex contain the TPR (tetratricopeptide repeat), a protein domain important for protein-protein interaction. [provided by RefSeq, Jul 2008],function:Component of the anaphase promoting complex/cyclosome (APC/C), a cell cycle-regulated ubiquitin ligase that controls progression through mitosis and the G1 phase of the cell cycle.,pathway:Protein modification; protein ubiquitination.,PTM:Phosphorylated. Phosphorylation on Thr-556 occurs specifically during mitosis.,similarity:Belongs to the APC8/CDC23 family.,similarity:Contains 9 TPR repeats.,subunit:The APC/C is composed of at least 11 subunits.,

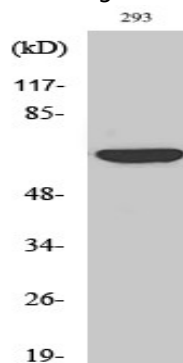
Research Area

Cell_Cycle_G1S;Cell_Cycle_G2M_DNA;Oocyte meiosis;Ubiquitin mediated proteolysis;Progesterone-mediated oocyte maturation;

Image Data



Western Blot analysis of various cells using Cdc23 Polyclonal Antibody diluted at 1: 2000



Western Blot analysis of COS7 cells using Cdc23 Polyclonal Antibody diluted at 1: 2000

Product Name: Cdc23 Rabbit Polyclonal Antibody
Catalog #: APRab08503



Note

For research use only.