

## Summary

<b>Production Name</b>	CD84 Rabbit Polyclonal Antibody
<b>Description</b>	Rabbit Polyclonal Antibody
<b>Host</b>	Rabbit
<b>Application</b>	WB,IHC,
<b>Reactivity</b>	Human,Mouse

## Performance

<b>Conjugation</b>	Unconjugated
<b>Modification</b>	Unmodified
<b>Isotype</b>	IgG
<b>Clonality</b>	Polyclonal
<b>Form</b>	Liquid
<b>Storage</b>	Store at 4°C short term. Aliquot and store at -20°C long term. Avoid freeze/thaw cycles.
<b>Buffer</b>	Liquid in PBS containing 50% glycerol, 0.5% BSA and 0.02% New type preservative N.
<b>Purification</b>	Affinity purification

## Immunogen

<b>Gene Name</b>	CD84 CD84; SLAMF5; SLAM family member 5; Cell surface antigen MAX.3; Hly9-beta;
<b>Alternative Names</b>	Leukocyte differentiation antigen CD84; Signaling lymphocytic activation molecule 5; CD84
<b>Gene ID</b>	8832.0
<b>SwissProt ID</b>	Q9UIB8.The antiserum was produced against synthesized peptide derived from the Internal region of human CD84. AA range:131-180

## Application

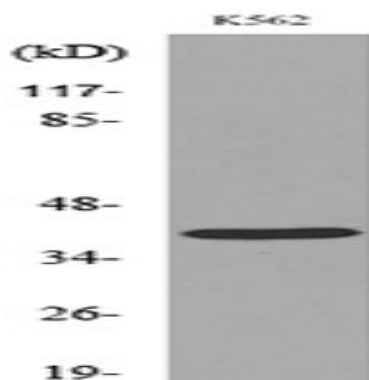
<b>Dilution Ratio</b>	WB 1:500 - 1:2000 IHC 1:100 - 1:300. ELISA: 1:20000..
<b>Molecular Weight</b>	39kD

## Background

This gene encodes a membrane glycoprotein that is a member of the signaling lymphocyte activation molecule (SLAM) family. This family forms a subset of the larger CD2 cell-surface receptor Ig superfamily. The encoded protein is a homophilic adhesion molecule that is expressed in numerous immune cells types and is involved in regulating receptor-mediated signaling in those cells. Alternate splicing results in multiple transcript variants. [provided by RefSeq, Oct 2011],developmental stage:Expression is slightly increased in naive B-cells after the first division. By contrast, expression on memory B-cells decreased with each successive division.,domain:ITSM (immunoreceptor tyrosine-based switch motif) motif is a cytoplasmic motif which may bind SH2D1A.,function:Plays a role as adhesion receptor functioning by homophilic interactions and by clustering. Recruits SH2 domain-containing proteins SH2D1A/SAP. Increases proliferative responses of activated T-cells and SH2D1A/SAP does not seen be required for this process. Homophilic interactions enhance interferon gamma/IFNG secretion in lymphocytes and induce platelet stimulation via a SH2D1A/SAP-dependent pathway. May serve as a marker for hematopoietic progenitor cells.,PTM:N-glycosylated.,PTM:Phosphorylated by tyrosine-protein kinase LCK on tyrosine residues following ligation induced by agonist monoclonal antibody. The association with SH2D1A/SAP is dependent of tyrosines phosphorylation of its cytoplasmic domain Phosphorylated on Tyr-296 and Tyr-316 following platelet aggregation.,similarity:Contains 1 Ig-like C2-type (immunoglobulin-like) domain.,subunit:Homodimer; via its extracellular domain. Forms a head to tail dimer with a CD48 molecule from another cell. Interacts with SH2 domain-containing proteins SH2D1A/SAP and SH2D1B/hEAT-2. Interacts with tyrosine-protein phosphatases PTPN6 and PTPN11 via its phosphorylated cytoplasmic domain, and this interaction is blocked by SH2D1A.,tissue specificity:Predominantly expressed in hematopoietic tissues, such as lymph node, spleen and peripheral leukocytes. Expressed in macrophages, B-cells, monocytes, platelets, thymocytes, T-cells and dendritic cells. Highly expressed in memory T-cells.,

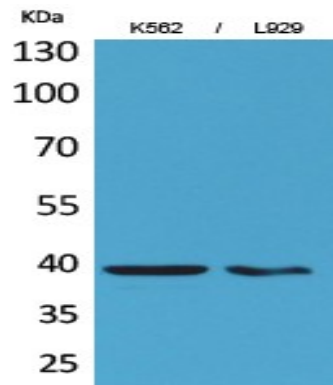
## Research Area

### Image Data

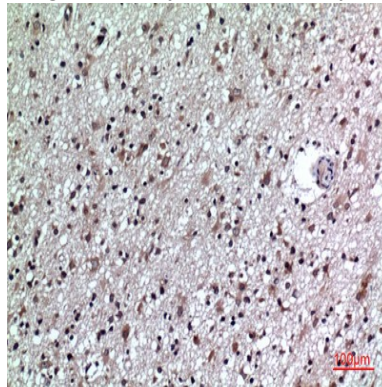


Western blot analysis of lysate from K562 cells, using CD84 Antibody.

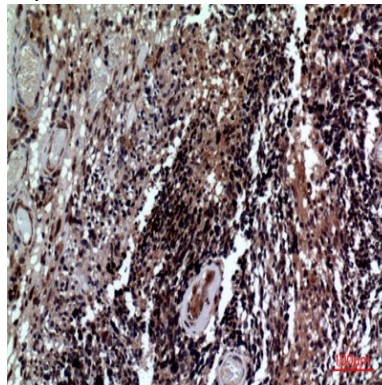
**Product Name: CD84 Rabbit Polyclonal Antibody**  
**Catalog #: APRab08470**



Western Blot analysis of K562, L929 cells using CD84 Polyclonal Antibody.. Secondary antibody was diluted at 1:20000



Immunohistochemical analysis of paraffin-embedded human-brain, antibody was diluted at 1:100



Immunohistochemical analysis of paraffin-embedded human-brain, antibody was diluted at 1:100

## Note

For research use only.