

Summary

Production Name	CD72 Rabbit Polyclonal Antibody
Description	Rabbit Polyclonal Antibody
Host	Rabbit
Application	WB,IHC,IF,ELISA
Reactivity	Human,Rat,Mouse

Performance

Conjugation	Unconjugated
Modification	Unmodified
Isotype	IgG
Clonality	Polyclonal
Form	Liquid
Storage	Store at 4°C short term. Aliquot and store at -20°C long term. Avoid freeze/thaw cycles.
Buffer	Liquid in PBS containing 50% glycerol, 0.5% BSA and 0.02% New type preservative N.
Purification	Affinity purification

Immunogen

Gene Name	CD72
Alternative Names	CD72; B-cell differentiation antigen CD72; Lyb-2; CD72
Gene ID	971.0
SwissProt ID	P21854.The antiserum was produced against synthesized peptide derived from the Internal region of human CD72. AA range:170-220

Application

Dilution Ratio	IHC-p: 100-300.WB 1:500 - 1:2000. ELISA: 1:10000.. IF 1:50-200
Molecular Weight	40kD

Background

Product Name: CD72 Rabbit Polyclonal Antibody
Catalog #: APRab08447

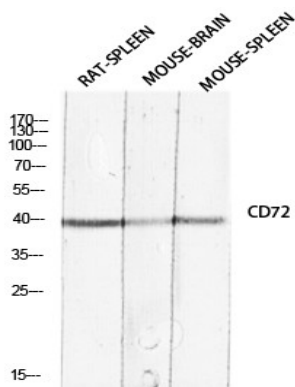


function: Plays a role in B-cell proliferation and differentiation. Associates with CD5.,online information: CD72, similarity: Contains 1 C-type lectin domain., subunit: Homodimer; disulfide-linked., tissue specificity: Pre-B-cells and B-cells but not terminally differentiated plasma cells., function: Plays a role in B-cell proliferation and differentiation. Associates with CD5.,online information: CD72, similarity: Contains 1 C-type lectin domain., subunit: Homodimer; disulfide-linked., tissue specificity: Pre-B-cells and B-cells but not terminally differentiated plasma cells.,

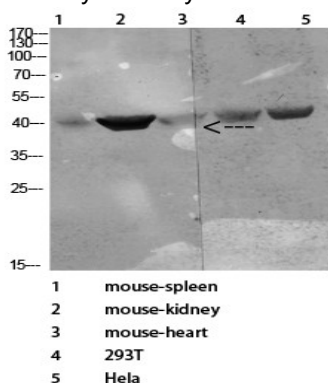
Research Area

B_Cell_Antigen;

Image Data

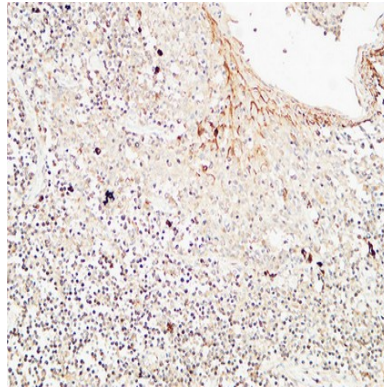


Western blot analysis of RAT-SPLEEN MOUSE-BRAIN MOUSE-SPLEEN lysis using CD72 antibody. Antibody was diluted at 1:2000. Secondary antibody was diluted at 1:20000

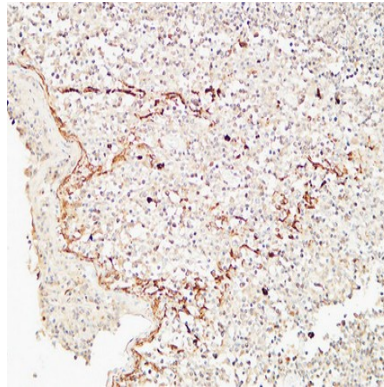


Western Blot analysis of various cells using Antibody diluted at 1:1000. Secondary antibody was diluted at 1:20000

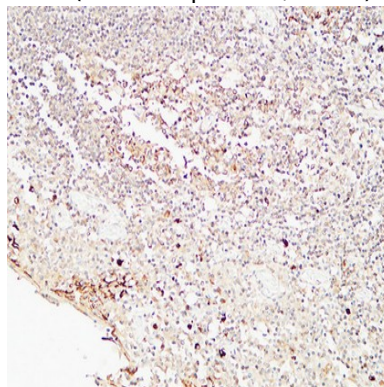
Product Name: CD72 Rabbit Polyclonal Antibody
Catalog #: APRab08447



Immunohistochemical analysis of paraffin-embedded Human Amygdala. 1, Antibody was diluted at 1:100 (4°,overnight) . 2, High-pressure and temperature EDTA, pH8.0 was used for antigen retrieval. 3,Secondary antibody was diluted at 1:200 (room temperature, 30min) .

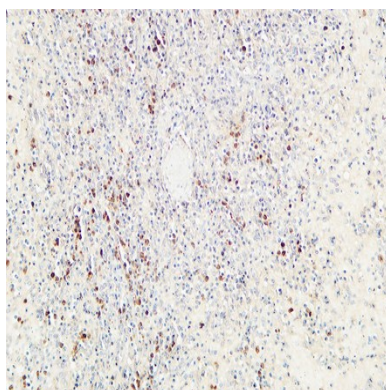


Immunohistochemical analysis of paraffin-embedded Human Amygdala. 1, Antibody was diluted at 1:100 (4°,overnight) . 2, High-pressure and temperature EDTA, pH8.0 was used for antigen retrieval. 3,Secondary antibody was diluted at 1:200 (room temperature, 30min) .

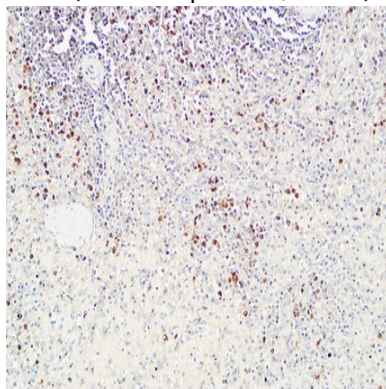


Immunohistochemical analysis of paraffin-embedded Human Amygdala. 1, Antibody was diluted at 1:100 (4°,overnight) . 2, High-pressure and temperature EDTA, pH8.0 was used for antigen retrieval. 3,Secondary antibody was diluted at 1:200 (room temperature, 30min) .

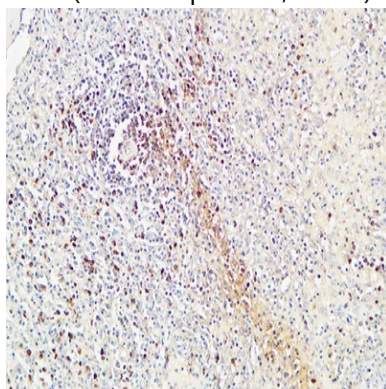
Product Name: CD72 Rabbit Polyclonal Antibody
Catalog #: APRab08447



Immunohistochemical analysis of paraffin-embedded Human spleen. 1, Antibody was diluted at 1:100 (4°,overnight) . 2, High-pressure and temperature EDTA, pH8.0 was used for antigen retrieval. 3,Secondary antibody was diluted at 1:200 (room temperature, 30min) .



Immunohistochemical analysis of paraffin-embedded Human spleen. 1, Antibody was diluted at 1:100 (4°,overnight) . 2, High-pressure and temperature EDTA, pH8.0 was used for antigen retrieval. 3,Secondary antibody was diluted at 1:200 (room temperature, 30min) .



Immunohistochemical analysis of paraffin-embedded Human spleen. 1, Antibody was diluted at 1:100 (4°,overnight) . 2, High-pressure and temperature EDTA, pH8.0 was used for antigen retrieval. 3,Secondary antibody was diluted at 1:200 (room temperature, 30min) .

Product Name: CD72 Rabbit Polyclonal Antibody
Catalog #: APRab08447



Note

For research use only.