

Summary

Production Name	CD52 Rabbit Polyclonal Antibody
Description	Rabbit Polyclonal Antibody
Host	Rabbit
Application	IHC,ELISA
Reactivity	Human,Rat,Mouse

Performance

Conjugation	Unconjugated
Modification	Unmodified
Isotype	IgG
Clonality	Polyclonal
Form	Liquid
Storage	Store at 4°C short term. Aliquot and store at -20°C long term. Avoid freeze/thaw cycles.
Buffer	Liquid in PBS containing 50% glycerol, 0.5% BSA and 0.02% New type preservative N.
Purification	Affinity purification

Immunogen

Gene Name	CD52 CDW52 HE5
Alternative Names	CAMPATH-1 antigen (CDw52;Cambridge pathology 1 antigen;Epididymal secretory protein E5;Human epididymis-specific protein 5;He5;CD antigen CD52)
Gene ID	1043.0
SwissProt ID	P31358.Synthetic peptide from human protein at AA range: 20-50

Application

Dilution Ratio	IHC-p 1:50-200, ELISA 1:10000-20000.
Molecular Weight	15-20kD

Background

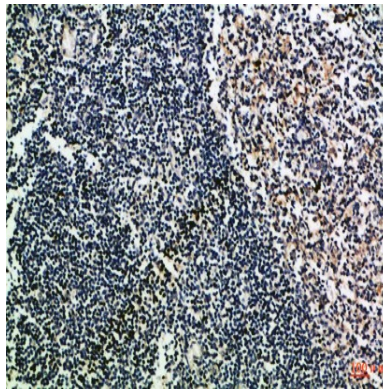
Product Name: CD52 Rabbit Polyclonal Antibody
Catalog #: APRab08414



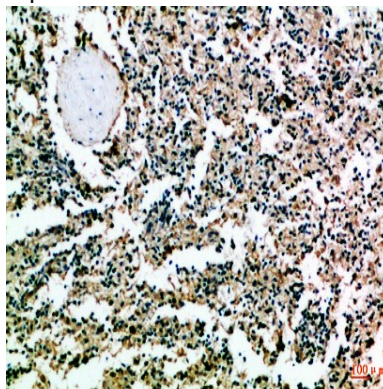
function:May play a role in carrying and orienting carbohydrate, as well as having a more specific role.,function:May play a role in carrying and orienting carbohydrate, as well as having a more specific role.,

Research Area

Image Data



Immunohistochemical analysis of paraffin-embedded Human-tonsil, antibody was diluted at 1:100



Immunohistochemical analysis of paraffin-embedded Human-spleen, antibody was diluted at 1:100

Note

For research use only.