

Product Name: CD5 Rabbit Polyclonal Antibody
Catalog #: APRab08411



Summary

Production Name	CD5 Rabbit Polyclonal Antibody
Description	Rabbit Polyclonal Antibody
Host	Rabbit
Application	WB,ELISA
Reactivity	Human,Mouse,Rat

Performance

Conjugation	Unconjugated
Modification	Unmodified
Isotype	IgG
Clonality	Polyclonal
Form	Liquid
Storage	Store at 4°C short term. Aliquot and store at -20°C long term. Avoid freeze/thaw cycles.
Buffer	Liquid in PBS containing 50% glycerol, 0.5% BSA and 0.02% New type preservative N.
Purification	Affinity purification

Immunogen

Gene Name	CD5
Alternative Names	CD5; LEU1; T-cell surface glycoprotein CD5; Lymphocyte antigen T1/Leu-1; CD antigen CD5
Gene ID	921.0
SwissProt ID	P06127.The antiserum was produced against synthesized peptide derived from human CD5. AA range:421-470

Application

Dilution Ratio	WB 1:500 - 1:2000. ELISA: 1:20000
Molecular Weight	60kD

Product Name: CD5 Rabbit Polyclonal Antibody
Catalog #: APRab08411



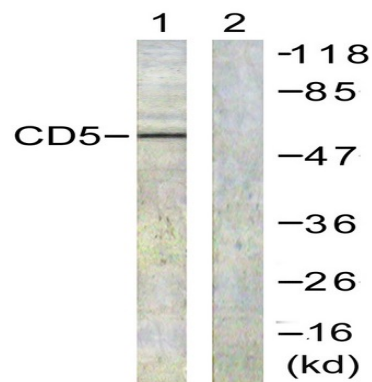
Background

function:May act as a receptor in regulating T-cell proliferation. CD5 interacts with CD72/LYB-2.,similarity:Contains 3 SRCR domains.,function:May act as a receptor in regulating T-cell proliferation. CD5 interacts with CD72/LYB-2.,similarity:Contains 3 SRCR domains.,

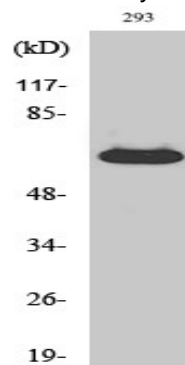
Research Area

Hematopoietic cell lineage;

Image Data



Western blot analysis of lysates from 293 cells, treated with PMA 125ng/ml 30', using CD5 Antibody. The lane on the right is blocked with the synthesized peptide.



Western Blot analysis of various cells using CD5 Polyclonal Antibody

Note

For research use only.