

Summary

Production Name	CD39 Rabbit Polyclonal Antibody
Description	Rabbit Polyclonal Antibody
Host	Rabbit
Application	WB
Reactivity	Human,Mouse,Rat

Performance

Conjugation	Unconjugated
Modification	Unmodified
Isotype	IgG
Clonality	Polyclonal
Form	Liquid
Storage	Store at 4°C short term. Aliquot and store at -20°C long term. Avoid freeze/thaw cycles.
Buffer	Liquid in PBS containing 50% glycerol, 0.5% BSA and 0.02% New type preservative N.
Purification	Affinity purification

Immunogen

Gene Name	ENTPD1
Alternative Names	ENTPD1; CD39; Ectonucleoside triphosphate diphosphohydrolase 1; NTPDase 1; Ecto-ATP diphosphohydrolase 1; Ecto-ATPDase 1; Ecto-ATPase 1; Ecto-apyrase; Lymphoid cell activation antigen; CD39
Gene ID	953.0
SwissProt ID	P49961.The antiserum was produced against synthesized peptide derived from the Internal region of human ENTDP1. AA range:31-80

Application

Dilution Ratio	WB 1:500-1:2000. ELISA: 1:10000.
Molecular Weight	56kD

Product Name: CD39 Rabbit Polyclonal Antibody
Catalog #: APRab08381



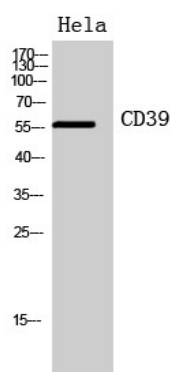
Background

The protein encoded by this gene is a plasma membrane protein that hydrolyzes extracellular ATP and ADP to AMP. Inhibition of this protein's activity may confer anticancer benefits. Several transcript variants encoding different isoforms have been found for this gene. [provided by RefSeq, Aug 2015],catalytic activity:ATP + 2 H(2)O = AMP + 2 phosphate.,cofactor:Calcium.,cofactor:Magnesium.,function:In the nervous system, could hydrolyze ATP and other nucleotides to regulate purinergic neurotransmission. Could also be implicated in the prevention of platelet aggregation. Hydrolyzes ATP and ADP equally well.,PTM:Palmitoylated in the N-terminal part.,PTM:The N-terminus is blocked.,similarity:Belongs to the GDA1/CD39 NTPase family.,subunit:Homodimer; disulfide-linked.,tissue specificity:Expressed primarily on activated lymphoid cells. Also expressed in endothelial tissues. The vascular isoform and the placental isoform II are present in both placenta and umbilical vein, whereas placental isoform I is present in placenta only.,

Research Area

Purine metabolism;Pyrimidine metabolism;

Image Data



Western Blot analysis of HeLa cells using CD39 Polyclonal Antibody.. Secondary antibody was diluted at 1:20000

Note

For research use only.