

## Summary

<b>Production Name</b>	CD34 Rabbit Polyclonal Antibody
<b>Description</b>	Rabbit Polyclonal Antibody
<b>Host</b>	Rabbit
<b>Application</b>	WB,IHC,IF,ELISA
<b>Reactivity</b>	Human,Mouse

## Performance

<b>Conjugation</b>	Unconjugated
<b>Modification</b>	Unmodified
<b>Isotype</b>	IgG
<b>Clonality</b>	Polyclonal
<b>Form</b>	Liquid
<b>Storage</b>	Store at 4°C short term. Aliquot and store at -20°C long term. Avoid freeze/thaw cycles.
<b>Buffer</b>	Liquid in PBS containing 50% glycerol, 0.5% BSA and 0.02% New type preservative N.
<b>Purification</b>	Affinity purification

## Immunogen

<b>Gene Name</b>	CD34
<b>Alternative Names</b>	CD34; Hematopoietic progenitor cell antigen CD34; CD antigen CD34
<b>Gene ID</b>	947.0
<b>SwissProt ID</b>	P28906.The antiserum was produced against synthesized peptide derived from human CD34. AA range:208-257

## Application

<b>Dilution Ratio</b>	WB 1:500-2000;IHC-p 1:100-500;IF ICC 1:100-500;ELISA 1:5000-20000
<b>Molecular Weight</b>	110kD

## Background

**Product Name: CD34 Rabbit Polyclonal Antibody**  
**Catalog #: APRab08373**

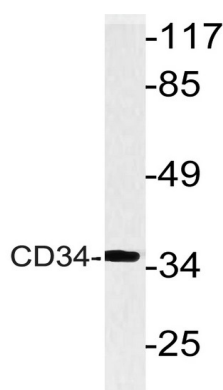


The protein encoded by this gene may play a role in the attachment of stem cells to the bone marrow extracellular matrix or to stromal cells. This single-pass membrane protein is highly glycosylated and phosphorylated by protein kinase C. Two transcript variants encoding different isoforms have been found for this gene. [provided by RefSeq, Aug 2011], alternative products: Both isoforms are expressed on the cell surface. CD34-T/CD34-F ratio increases with cell differentiation, developmental stage: On early hematopoietic progenitor cells., disease: Abnormal CD34 expression in leukemogenesis., function: Possible adhesion molecule with a role in early hematopoiesis by mediating the attachment of stem cells to the bone marrow extracellular matrix or directly to stromal cells. Could act as a scaffold for the attachment of lineage specific glycans, allowing stem cells to bind to lectins expressed by stromal cells or other marrow components. Presents carbohydrate ligands to selectins., online information: CD34 entry, PTM: Highly glycosylated., PTM: Phosphorylated on serine residues by PKC., similarity: Belongs to the CD34 family., tissue specificity: Selectively expressed on hematopoietic progenitor cells and the small vessel endothelium of a variety of tissues.,

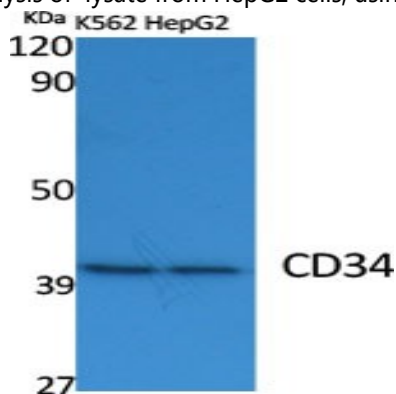
## Research Area

Cell adhesion molecules (CAMs); Hematopoietic cell lineage;

## Image Data

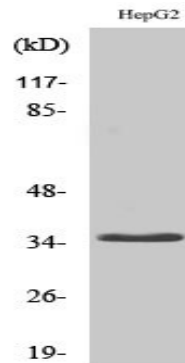


Western blot analysis of lysate from HepG2 cells, using CD34 antibody.

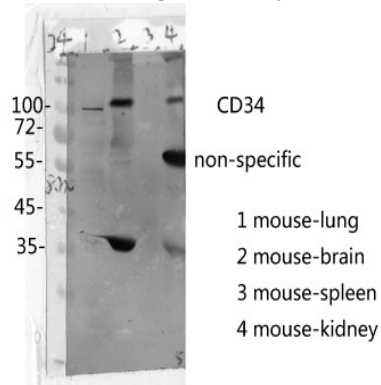


Western Blot analysis of various cells using CD34 Polyclonal Antibody diluted at 1 : 2000

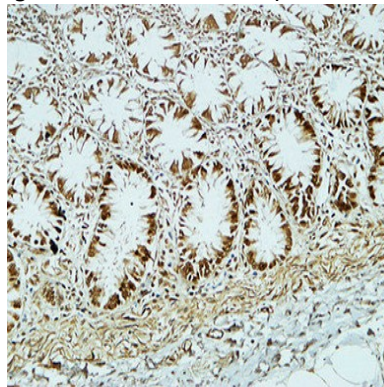
**Product Name: CD34 Rabbit Polyclonal Antibody**  
**Catalog #: APRab08373**



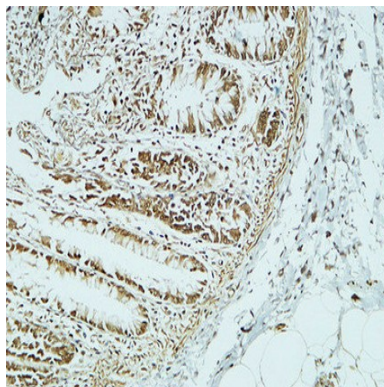
Western Blot analysis of HepG2 cells using CD34 Polyclonal Antibody diluted at 1: 2000



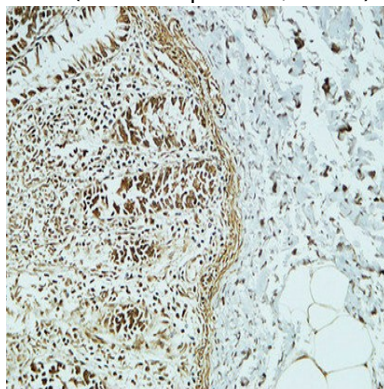
mouse-lung mouse-brain mouse-spleen mouse-kidney



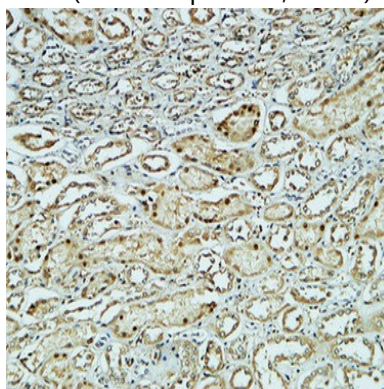
Immunohistochemical analysis of paraffin-embedded Human colon. 1, Antibody was diluted at 1:200 (4°, overnight) . 2, High-pressure and temperature EDTA, pH8.0 was used for antigen retrieval. 3, Secondary antibody was diluted at 1:200 (room temperature, 30min) .



Immunohistochemical analysis of paraffin-embedded Human colon. 1, Antibody was diluted at 1:200 (4°,overnight) . 2, High-pressure and temperature EDTA, pH8.0 was used for antigen retrieval. 3,Secondary antibody was diluted at 1:200 (room temperature, 30min) .

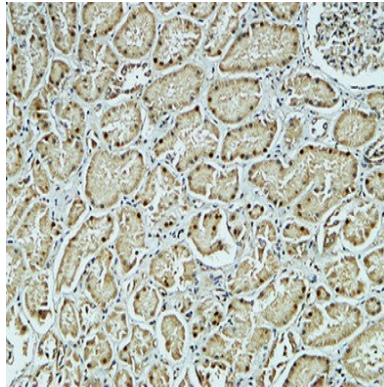


Immunohistochemical analysis of paraffin-embedded Human colon. 1, Antibody was diluted at 1:200 (4°,overnight) . 2, High-pressure and temperature EDTA, pH8.0 was used for antigen retrieval. 3,Secondary antibody was diluted at 1:200 (room temperature, 30min) .



Immunohistochemical analysis of paraffin-embedded Human kidney. 1, Antibody was diluted at 1:200 (4°,overnight) . 2, High-pressure and temperature EDTA, pH8.0 was used for antigen retrieval. 3,Secondary antibody was diluted at 1:200 (room temperature, 30min) .

**Product Name: CD34 Rabbit Polyclonal Antibody**  
**Catalog #: APRab08373**



Immunohistochemical analysis of paraffin-embedded Human kidney. 1, Antibody was diluted at 1:200 (4°, overnight) . 2, High-pressure and temperature EDTA, pH8.0 was used for antigen retrieval. 3, Secondary antibody was diluted at 1:200 (room temperature, 30min) .

### **Note**

For research use only.