

## Summary

<b>Production Name</b>	CD32-B/C Rabbit Polyclonal Antibody
<b>Description</b>	Rabbit Polyclonal Antibody
<b>Host</b>	Rabbit
<b>Application</b>	WB
<b>Reactivity</b>	Human,Rat,Mouse

## Performance

<b>Conjugation</b>	Unconjugated
<b>Modification</b>	Unmodified
<b>Isotype</b>	IgG
<b>Clonality</b>	Polyclonal
<b>Form</b>	Liquid
<b>Storage</b>	Store at 4°C short term. Aliquot and store at -20°C long term. Avoid freeze/thaw cycles.
<b>Buffer</b>	Liquid in PBS containing 50% glycerol, 0.5% BSA and 0.02% New type preservative N.
<b>Purification</b>	Affinity purification

## Immunogen

<b>Gene Name</b>	FCGR2B/FCGR2C FCGR2B; CD32; FCG2; IGFR2; Low affinity immunoglobulin gamma Fc region receptor II-b; IgG Fc receptor II-b; CDw32; Fc-gamma RII-b; Fc-gamma-RIIb; FcRII-b; CD32;
<b>Alternative Names</b>	FCGR2C; CD32; FCG2; IGFR2;Low affinity immunoglobulin gamma Fc region receptor II-c; IgG Fc receptor II-c; CDw32; Fc-gamma RII-c; Fc-gamma-RIIc; FcRII-c; CD32
<b>Gene ID</b>	2213.0
<b>SwissProt ID</b>	P31994.The antiserum was produced against synthesized peptide derived from the Internal region of human FCGR2B/C. AA range:141-190

## Application

<b>Dilution Ratio</b>	WB 1:500-1:2000. ELISA: 1:20000.
<b>Molecular Weight</b>	35kD

**Product Name: CD32-B/C Rabbit Polyclonal Antibody**  
**Catalog #: APRab08368**



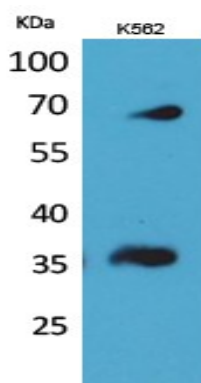
## Background

Low affinity immunoglobulin gamma Fc region receptor II-b/Low affinity immunoglobulin gamma Fc region receptor II-c encoded by FCGR2B is a low affinity receptor for the Fc region of immunoglobulin gamma complexes. The encoded protein is involved in the phagocytosis of immune complexes and in the regulation of antibody production by B-cells. Variations in this gene may increase susceptibility to systemic lupus erythematosus (SLE). Several transcript variants encoding different isoforms have been found for this gene. immune response,

## Research Area

B\_Cell\_Antigen;Fc gamma R-mediated phagocytosis;Systemic lupus erythematosus;

## Image Data



Western Blot analysis of K562 cells using CD32-B/C Polyclonal Antibody.. Secondary antibody was diluted at 1:20000

## Note

For research use only.