

---

## Summary

<b>Production Name</b>	CD32 Rabbit Polyclonal Antibody
<b>Description</b>	Rabbit Polyclonal Antibody
<b>Host</b>	Rabbit
<b>Application</b>	WB,ELISA
<b>Reactivity</b>	Human,Mouse,Rat

## Performance

<b>Conjugation</b>	Unconjugated
<b>Modification</b>	Unmodified
<b>Isotype</b>	IgG
<b>Clonality</b>	Polyclonal
<b>Form</b>	Liquid
<b>Storage</b>	Store at 4°C short term. Aliquot and store at -20°C long term. Avoid freeze/thaw cycles.
<b>Buffer</b>	Liquid in PBS containing 50% glycerol, 0.5% BSA and 0.02% New type preservative N.
<b>Purification</b>	Affinity purification

## Immunogen

<b>Gene Name</b>	FCGR2B
<b>Alternative Names</b>	
<b>Gene ID</b>	2213.0
<b>SwissProt ID</b>	P31994 .The antiserum was produced against synthesized peptide derived from human CD32. AA range:277-326

## Application

<b>Dilution Ratio</b>	WB 1:500 - 1:2000. ELISA: 1:5000
<b>Molecular Weight</b>	34kD

## Background

---

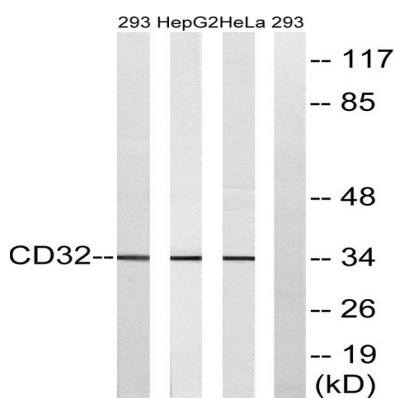
**Product Name: CD32 Rabbit Polyclonal Antibody**  
**Catalog #: APRab08360**



The Fc fragment of IgG receptor IIb encoded by FCGR2B is a low affinity receptor for the Fc region of immunoglobulin gamma complexes. The encoded protein is involved in the phagocytosis of immune complexes and in the regulation of antibody production by B-cells. Variations in this gene may increase susceptibility to systemic lupus erythematosus (SLE). Several transcript variants encoding different isoforms have been found for this gene.

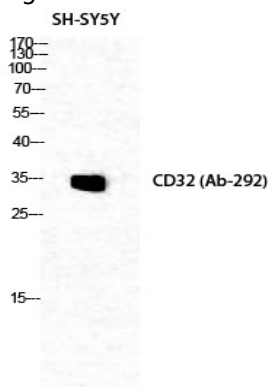
## Research Area

## Image Data



Western blot analysis of lysates from 293, HepG2, and HeLa cells, treated with PMA 125ng/ml 30', using CD32 Antibody.

The lane on the right is blocked with the synthesized peptide.



Western Blot analysis of SH-SY5Y cells using CD32 Polyclonal Antibody diluted at 1: 1000

## Note

For research use only.