

Summary

Production Name	CD300e Rabbit Polyclonal Antibody
Description	Rabbit Polyclonal Antibody
Host	Rabbit
Application	IHC,ELISA
Reactivity	Human,Rat,Mouse

Performance

Conjugation	Unconjugated
Modification	Unmodified
Isotype	IgG
Clonality	Polyclonal
Form	Liquid
Storage	Store at 4°C short term. Aliquot and store at -20°C long term. Avoid freeze/thaw cycles.
Buffer	Liquid in PBS containing 50% glycerol, 0.5% BSA and 0.02% New type preservative N.
Purification	Affinity purification

Immunogen

Gene Name	CD300E CD300LE CLM2 CMRF35A5 IREM2
Alternative Names	CMRF35-like molecule 2 (CLM-2;CD300 antigen-like family member E;CMRF35-A5;Immune receptor expressed on myeloid cells 2;IREM-2;Polymeric immunoglobulin receptor 2;PIgR-2;PIgR2;Poly-Ig receptor 2;CD antigen CD300e)
Gene ID	342510.0
SwissProt ID	Q496F6.Synthetic peptide from human protein at AA range: 31-80

Application

Dilution Ratio	IHC-p 1:50-200, ELISA 1:10000-20000.
Molecular Weight	

Product Name: CD300e Rabbit Polyclonal Antibody
Catalog #: APRab08343

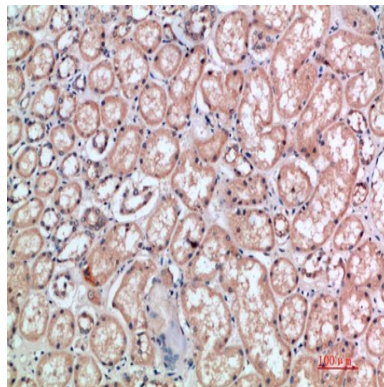


Background

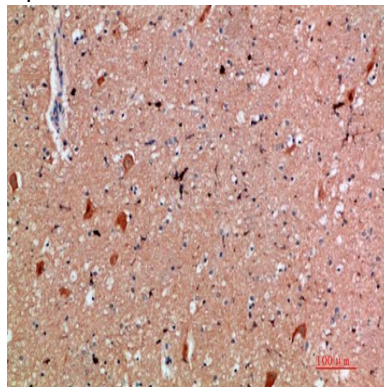
CD300e molecule(CD300E) Homo sapiens This gene encodes a member of the CD300 glycoprotein family of cell surface proteins expressed on myeloid cells. The protein interacts with the TYRO protein tyrosine kinase-binding protein and is thought to act as an activating receptor. [provided by RefSeq, Nov 2012],function:Probably acts as an activating receptor.,PTM:N-glycosylated.,similarity:Belongs to the CD300 family.,similarity:Contains 1 Ig-like V-type (immunoglobulin-like) domain.,subunit:Interacts with TYROBP.,tissue specificity:Present on the surface of mature hematopoietic cells of the monocyte and myeloid lineages (at protein level),

Research Area

Image Data



Immunohistochemical analysis of paraffin-embedded human-kidney, antibody was diluted at 1:200



Immunohistochemical analysis of paraffin-embedded human-brain, antibody was diluted at 1:200

Note

For research use only.