

Summary

Production Name	CD300b Rabbit Polyclonal Antibody
Description	Rabbit Polyclonal Antibody
Host	Rabbit
Application	IHC,ELISA
Reactivity	Human,Rat,Mouse

Performance

Conjugation	Unconjugated
Modification	Unmodified
Isotype	IgG
Clonality	Polyclonal
Form	Liquid
Storage	Store at 4°C short term. Aliquot and store at -20°C long term. Avoid freeze/thaw cycles.
Buffer	Liquid in PBS containing 50% glycerol, 0.5% BSA and 0.02% New type preservative N.
Purification	Affinity purification

Immunogen

Gene Name	CD300LB CD300B CLM7 CMRF35A2 IREM3 LMIR5 TREM5 UNQ2530/PRO6029 CMRF35-like molecule 7 (CLM-7;CD300 antigen-like family member B;CMRF35-A2;Immune receptor expressed on myeloid cells 3;IREM-3;Leukocyte mono-Ig-like receptor 5;Triggering receptor expressed on myeloid cells 5;TREM-5;CD antigen CD300b)
Alternative Names	
Gene ID	124599.0
SwissProt ID	A8K4G0.Synthetic peptide from human protein at AA range: 61-110

Application

Dilution Ratio	IHC-p 1:50-200, ELISA 1:10000-20000.
Molecular Weight	

Product Name: CD300b Rabbit Polyclonal Antibody
Catalog #: APRab08340

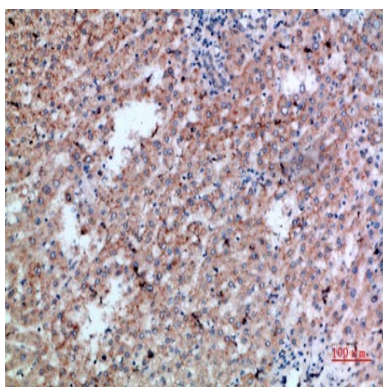


Background

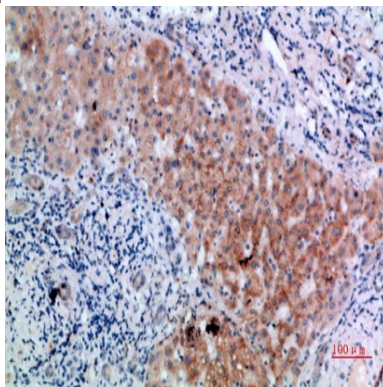
CD300LB is a nonclassical activating receptor of the immunoglobulin (Ig) superfamily expressed on myeloid cells (Martinez-Barriocanal and Sayos, 2006 [PubMed 16920917]).[supplied by OMIM, Mar 2008],function:Acts as an activating immune receptor through its interaction with ITAM-bearing adapter TYROBP, and also independently by recruitment of GRB2.,PTM:Phosphorylation on Tyr-188 by FYN is required for interaction with GRB2.,similarity:Belongs to the CD300 family.,similarity:Contains 1 Ig-like V-type (immunoglobulin-like) domain.,subunit:Interacts with TYROBP, which enhances cell surface expression and activation properties. Interacts with GRB2 in the presence of FYN.,tissue specificity:Expressed exclusively in myeloid lineages.,

Research Area

Image Data



Immunohistochemical analysis of paraffin-embedded human-liver-cancer, antibody was diluted at 1:200



Immunohistochemical analysis of paraffin-embedded human-liver-cancer, antibody was diluted at 1:200

Note

For research use only.

Product Name: CD300b Rabbit Polyclonal Antibody
Catalog #: APRab08340

