

## Summary

<b>Production Name</b>	CD300a Rabbit Polyclonal Antibody
<b>Description</b>	Rabbit Polyclonal Antibody
<b>Host</b>	Rabbit
<b>Application</b>	IHC,ELISA
<b>Reactivity</b>	Human,Rat,Mouse

## Performance

<b>Conjugation</b>	Unconjugated
<b>Modification</b>	Unmodified
<b>Isotype</b>	IgG
<b>Clonality</b>	Polyclonal
<b>Form</b>	Liquid
<b>Storage</b>	Store at 4°C short term. Aliquot and store at -20°C long term. Avoid freeze/thaw cycles.
<b>Buffer</b>	Liquid in PBS containing 50% glycerol, 0.5% BSA and 0.02% New type preservative N.
<b>Purification</b>	Affinity purification

## Immunogen

<b>Gene Name</b>	CD300A CMRF35H IGSF12 HSPC083
<b>Alternative Names</b>	CMRF35-like molecule 8 (CLM-8;CD300 antigen-like family member A;CMRF-35-H9;CMRF35-H9;CMRF35-H;IRC1/IRC2;Immunoglobulin superfamily member 12;IgSF12;Inhibitory receptor protein 60;IRp60;NK inhibitory receptor;CD antigen CD300a)
<b>Gene ID</b>	11314.0
<b>SwissProt ID</b>	Q9UGN4.Synthetic peptide from human protein at AA range: 141-190

## Application

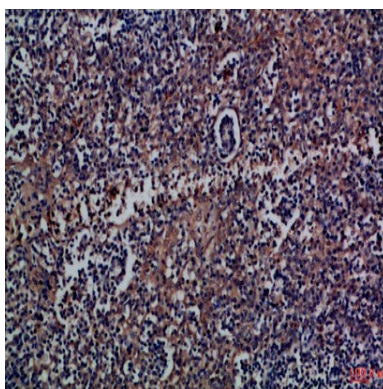
<b>Dilution Ratio</b>	IHC-p 1:50-200, ELISA 1:10000-20000.
<b>Molecular Weight</b>	

## Background

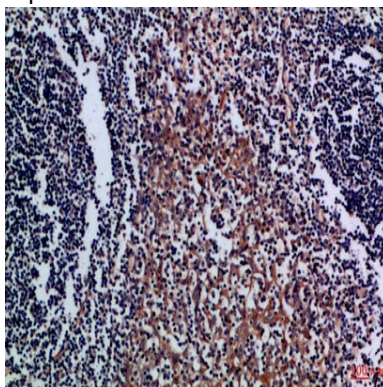
CD300a molecule(CD300A) Homo sapiens This gene encodes a member of the CD300 glycoprotein family of cell surface proteins found on leukocytes involved in immune response signaling pathways. This gene is located on chromosome 17 in a cluster with all but one of the other family members. Multiple transcript variants encoding different isoforms have been found for this gene. [provided by RefSeq, Feb 2012],function:Inhibitory receptor which may contribute to the down-regulation of cytolytic activity in natural killer (NK) cells, and to the down-regulation of mast cell degranulation.,PTM:Phosphorylated on tyrosine.,similarity:Belongs to the CD300 family.,similarity:Contains 1 Ig-like V-type (immunoglobulin-like) domain.,subunit:Upon tyrosine-phosphorylation, interacts with PTN6/SHP-1 and PTPN11/SHP-2 and INPP5D.,tissue specificity:Expressed not only by natural killer (NK) cells but also by T-cell subsets, B-cells, dendritic cells, mast cells, granulocytes and monocytes.,

## Research Area

## Image Data



Immunohistochemical analysis of paraffin-embedded Human-tonsil, antibody was diluted at 1:100



Immunohistochemical analysis of paraffin-embedded Human-tonsil, antibody was diluted at 1:100

**Product Name: CD300a Rabbit Polyclonal Antibody**  
**Catalog #: APRab08339**

---



**Note**

For research use only.