

## Summary

<b>Production Name</b>	CD240d Rabbit Polyclonal Antibody
<b>Description</b>	Rabbit Polyclonal Antibody
<b>Host</b>	Rabbit
<b>Application</b>	WB,ELISA
<b>Reactivity</b>	Human,Rat,Mouse

## Performance

<b>Conjugation</b>	Unconjugated
<b>Modification</b>	Unmodified
<b>Isotype</b>	IgG
<b>Clonality</b>	Polyclonal
<b>Form</b>	Liquid
<b>Storage</b>	Store at 4°C short term. Aliquot and store at -20°C long term. Avoid freeze/thaw cycles.
<b>Buffer</b>	Liquid in PBS containing 50% glycerol, 0.5% BSA and 0.02% New type preservative N.
<b>Purification</b>	Affinity purification

## Immunogen

<b>Gene Name</b>	RHD
<b>Alternative Names</b>	RHD; Blood group Rh(D) polypeptide; RHXIII; Rh polypeptide 2; RhPII; Rhesus D antigen; CD240D
<b>Gene ID</b>	6007.0
<b>SwissProt ID</b>	Q02161.Synthesized peptide derived from Blood group Rh(D) polypeptide at AA range: 161-210

## Application

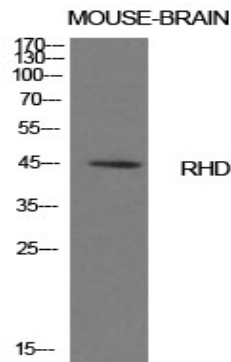
<b>Dilution Ratio</b>	WB 1:500 - 1:2000. ELISA: 1:10000
<b>Molecular Weight</b>	45kD

## Background

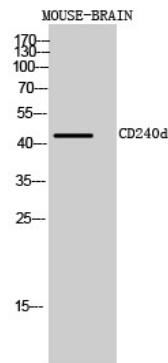
The Rh blood group system is the second most clinically significant of the blood groups, second only to ABO. It is also the most polymorphic of the blood groups, with variations due to deletions, gene conversions, and missense mutations. The Rh blood group includes this gene, which encodes the RhD protein, and a second gene that encodes both the RhC and RhE antigens on a single polypeptide. The two genes, and a third unrelated gene, are found in a cluster on chromosome 1. The classification of Rh-positive and Rh-negative individuals is determined by the presence or absence of the highly immunogenic RhD protein on the surface of erythrocytes. Multiple transcript variants encoding different isoforms have been found for this gene. [provided by RefSeq, Jul 2008],function:May be part of an oligomeric complex which is likely to have a transport or channel function in the erythrocyte membrane.,online information:Blood group antigen gene mutation database,polymorphism:RHD and RHCE are responsible for the Rh blood group system. The molecular basis of the Tar=Rh40 blood group antigen is a polymorphism in position 110.,similarity:Belongs to the ammonium transporter (TC 2.A.49) family. Rh subfamily.,tissue specificity:Restricted to tissues or cell lines expressing erythroid characters.,

## Research Area

## Image Data



Western Blot analysis of mouse brain cells using CD240d Polyclonal Antibody. Antibody was diluted at 1:1000. Secondary antibody was diluted at 1:20000



**Product Name: CD240d Rabbit Polyclonal Antibody**  
**Catalog #: APRab08303**



---

Western Blot analysis of MOUSE-BRAIN cells using CD240d Polyclonal Antibody diluted at 1: 1000. Secondary antibody was diluted at 1:20000

**Note**

For research use only.