

## Summary

<b>Production Name</b>	CD24 Rabbit Polyclonal Antibody
<b>Description</b>	Rabbit Polyclonal Antibody
<b>Host</b>	Rabbit
<b>Application</b>	WB
<b>Reactivity</b>	Human,Mouse,Rat

## Performance

<b>Conjugation</b>	Unconjugated
<b>Modification</b>	Unmodified
<b>Isotype</b>	IgG
<b>Clonality</b>	Polyclonal
<b>Form</b>	Liquid
<b>Storage</b>	Store at 4°C short term. Aliquot and store at -20°C long term. Avoid freeze/thaw cycles.
<b>Buffer</b>	Liquid in PBS containing 50% glycerol, 0.5% BSA and 0.02% New type preservative N.
<b>Purification</b>	Affinity purification

## Immunogen

<b>Gene Name</b>	CD24
<b>Alternative Names</b>	CD24; CD24A; Signal transducer CD24; Small cell lung carcinoma cluster 4 antigen; CD antigen CD24
<b>Gene ID</b>	100133941.0
<b>SwissProt ID</b>	P25063.The antiserum was produced against synthesized peptide derived from human CD24. AA range:14-63

## Application

<b>Dilution Ratio</b>	WB 1:500-1:2000. ELISA: 1:10000.
<b>Molecular Weight</b>	35,45kD

## Background

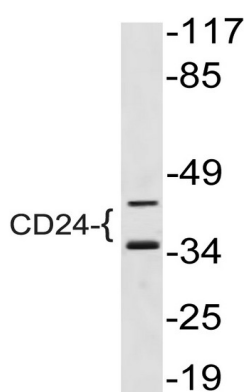
**Product Name: CD24 Rabbit Polyclonal Antibody**  
**Catalog #: APRab08301**



This gene encodes a sialoglycoprotein that is expressed on mature granulocytes and B cells and modulates growth and differentiation signals to these cells. The precursor protein is cleaved to a short 32 amino acid mature peptide which is anchored via a glycosyl phosphatidylinositol (GPI) link to the cell surface. This gene was missing from previous genome assemblies, but is properly located on chromosome 6. Non-transcribed pseudogenes have been designated on chromosomes 1, 15, 20, and Y. Alternative splicing results in multiple transcript variants. [provided by RefSeq, Apr 2014],disease:Genetic variations in CD24 are involved in multiple sclerosis susceptibility (MS) [MIM:126200]. MS is a neurodegenerative disorder characterized by the gradual accumulation of focal plaques of demyelination particularly in the periventricular areas of the brain. Peripheral nerves are not affected. Onset usually in third or fourth decade with intermittent progression over an extended period. The cause is still uncertain.,function:Modulates B-cell activation responses. Signaling could be triggered by the binding of a lectin-like ligand to the CD24 carbohydrates, and transduced by the release of second messengers derived from the GPI-anchor. Promotes AG-dependent proliferation of B-cells, and prevents their terminal differentiation into antibody-forming cells.,induction:Expression is lost when primary B-cells are induced to differentiate in antibody-forming cells.,PTM:Extensively O-glycosylated.,similarity:Belongs to the CD24 family.,subunit:Interacts with LYN and FGR in a cell-type specific manner. Binds FRG in a small cell cancer line, LYN in the erythroleukemia cell line K562 and in Burkitt's lymphoma.,tissue specificity:B-cells. Expressed in a number of B-cell lines including P32/SH and Nawalwa. Expressed in erythroleukemia cell and small cell lung carcinoma cell lines. Also expressed on the surface of T-cells.,

## Research Area

## Image Data



Western blot analysis of lysate from NIH/3T3 cells, using CD24 antibody.

## Note

For research use only.