

Product Name: CD238 Rabbit Polyclonal Antibody
Catalog #: APRab08297



Summary

Production Name	CD238 Rabbit Polyclonal Antibody
Description	Rabbit Polyclonal Antibody
Host	Rabbit
Application	WB,IHC,ELISA
Reactivity	Human,Rat,Mouse

Performance

Conjugation	Unconjugated
Modification	Unmodified
Isotype	IgG
Clonality	Polyclonal
Form	Liquid
Storage	Store at 4°C short term. Aliquot and store at -20°C long term. Avoid freeze/thaw cycles.
Buffer	Liquid in PBS containing 50% glycerol, 0.5% BSA and 0.02% New type preservative N.
Purification	Affinity purification

Immunogen

Gene Name	KEL
Alternative Names	Kell blood group, metallo-endopeptidase
Gene ID	3792.0
SwissProt ID	P23276.The antiserum was produced against synthesized peptide derived from the Internal region of human KEL. AA range:351-400

Application

Dilution Ratio	WB 1:500-2000 IHC 1:100 - 1:300.ELISA 1:10000-20000
Molecular Weight	82kD

Background

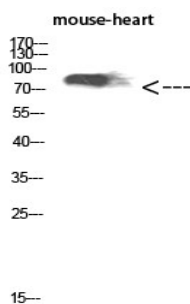
Product Name: CD238 Rabbit Polyclonal Antibody
Catalog #: APRab08297



This gene encodes a type II transmembrane glycoprotein that is the highly polymorphic Kell blood group antigen. The Kell glycoprotein links via a single disulfide bond to the XK membrane protein that carries the Kx antigen. The encoded protein contains sequence and structural similarity to members of the neprilysin (M13) family of zinc endopeptidases. [provided by RefSeq, Jul 2008], cofactor: Binds 1 zinc ion per subunit., function: Zinc endopeptidase with endothelin-3-converting enzyme activity., online information: Blood group antigen gene mutation database, polymorphism: KEL is responsible for the Kell blood group system. The molecular basis of the K=KEL1/k=KEL2 blood group antigens is a single variation in position 193; Thr-193 corresponds to KEL2 and Met-193 to KEL1. The molecular basis of the Kpa=KEL3/Kpb=KEL4/Kpc=KEL21 blood group antigens is a single variation in position 281; Arg-281 corresponds to KEL4, Trp-281 to KEL3 and Gln-281 to KEL21. The molecular basis of the Jsa=KEL6/Jsb=KEL7 blood group antigens is a single variation in position 597; Leu-597 corresponds to KEL7 and Pro-597 to KEL6. The molecular basis of the KEL11/KEL17 blood group antigens is a single variation in position 302; Val-302 corresponds to KEL11 and Ala-302 to KEL17. The molecular basis of the KEL14/KEL24 blood group antigens is a single variation in position 180; Arg-180 corresponds to KEL14 and Pro-180 to KEL24., similarity: Belongs to the peptidase M13 family., subcellular location: Spans the erythrocyte membrane, and is attached to the underlying cytoskeleton., subunit: Heterodimer with XK; disulfide-linked.,

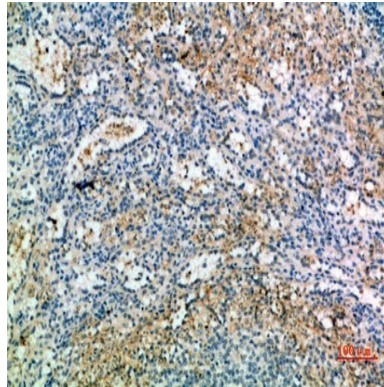
Research Area

Image Data



Western Blot analysis of mouse-heart cells using CD238 Polyclonal Antibody diluted at 1:1000. Secondary antibody was diluted at 1:20000

Product Name: CD238 Rabbit Polyclonal Antibody
Catalog #: APRab08297



Immunohistochemical analysis of paraffin-embedded human-spleen, antibody was diluted at 1:200

Note

For research use only.