
Summary

Production Name	CD229 Rabbit Polyclonal Antibody
Description	Rabbit Polyclonal Antibody
Host	Rabbit
Application	WB,IHC,ELISA
Reactivity	Human,Rat,Mouse

Performance

Conjugation	Unconjugated
Modification	Unmodified
Isotype	IgG
Clonality	Polyclonal
Form	Liquid
Storage	Store at 4°C short term. Aliquot and store at -20°C long term. Avoid freeze/thaw cycles.
Buffer	Liquid in PBS containing 50% glycerol, 0.5% BSA and 0.02% New type preservative N.
Purification	Affinity purification

Immunogen

Gene Name	LY9
Alternative Names	LY9; CDABP0070; T-lymphocyte surface antigen Ly-9; Cell surface molecule Ly-9; Lymphocyte antigen 9; CD229
Gene ID	4063.0
SwissProt ID	Q9HBG7.The antiserum was produced against synthesized peptide derived from the Internal region of human LY9. AA range:261-310

Application

Dilution Ratio	WB 1:500 - 1:2000. IHC-p: 1:100-300 ELISA: 1:20000..
Molecular Weight	72kD

Product Name: CD229 Rabbit Polyclonal Antibody
Catalog #: APRab08291

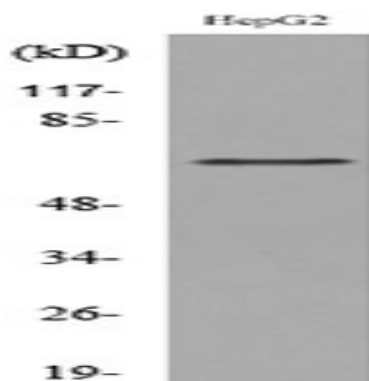


Background

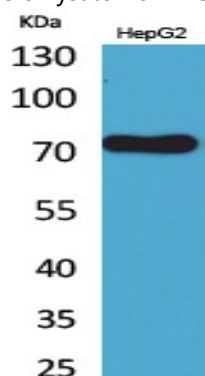
LY9 belongs to the SLAM family of immunomodulatory receptors (see SLAMF1; MIM 603492) and interacts with the adaptor molecule SAP (SH2D1A; MIM 300490) (Graham et al., 2006 [PubMed 16365421]).[supplied by OMIM, Mar 2008],alternative products:Experimental confirmation may be lacking for some isoforms,function:May participate in adhesion reactions between T lymphocytes and accessory cells by homophilic interaction.,similarity:Contains 2 Ig-like C2-type (immunoglobulin-like) domains.,similarity:Contains 2 Ig-like V-type (immunoglobulin-like) domains.,

Research Area

Image Data

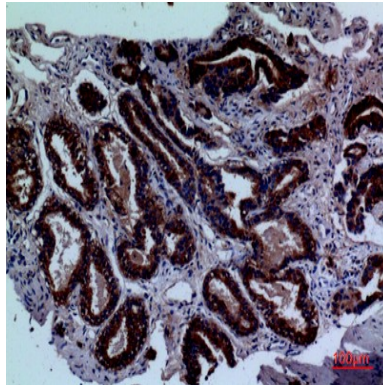


Western blot analysis of lysate from HepG2 cells, using LY9 Antibody.



Western Blot analysis of HepG2 cells using CD229 Polyclonal Antibody.. Secondary antibody was diluted at 1:20000

Product Name: CD229 Rabbit Polyclonal Antibody
Catalog #: APRab08291



Immunohistochemical analysis of paraffin-embedded human-prostate-cancer, antibody was diluted at 1:100

Note

For research use only.