
Summary

Production Name	CD225 Rabbit Polyclonal Antibody
Description	Rabbit Polyclonal Antibody
Host	Rabbit
Application	WB,IHC,
Reactivity	Human,Rat,Mouse

Performance

Conjugation	Unconjugated
Modification	Unmodified
Isotype	IgG
Clonality	Polyclonal
Form	Liquid
Storage	Store at 4°C short term. Aliquot and store at -20°C long term. Avoid freeze/thaw cycles.
Buffer	Liquid in PBS containing 50% glycerol, 0.5% BSA and 0.02% New type preservative N.
Purification	Affinity purification

Immunogen

Gene Name	IFITM1 IFITM1; CD225; IFI17; Interferon-induced transmembrane protein 1; Dispanin subfamily
Alternative Names	A member 2a; DSPA2a; Interferon-induced protein 17; Interferon-inducible protein 9-27; Leu-13 antigen; CD225
Gene ID	8519.0
SwissProt ID	P13164.The antiserum was produced against synthesized peptide derived from the N-terminal region of human IFITM1. AA range:1-50

Application

Dilution Ratio	WB 1:500 - 1:2000. IHC-p: 1:100-1:300. ELISA: 1:20000..
Molecular Weight	15kD

Product Name: CD225 Rabbit Polyclonal Antibody
Catalog #: APRab08288



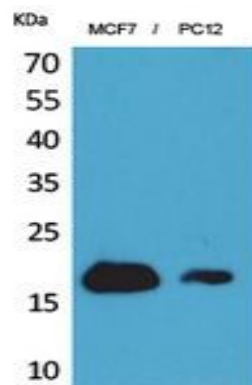
Background

function: Implicated in the control of cell growth. Component of a multimeric complex involved in the transduction of antiproliferative and homotypic adhesion signals., induction: By alpha and gamma interferons., similarity: Belongs to the CD225 family., function: Implicated in the control of cell growth. Component of a multimeric complex involved in the transduction of antiproliferative and homotypic adhesion signals., induction: By alpha and gamma interferons., similarity: Belongs to the CD225 family.,

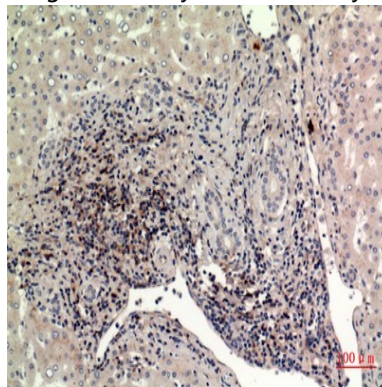
Research Area

B_Cell_Antigen;

Image Data

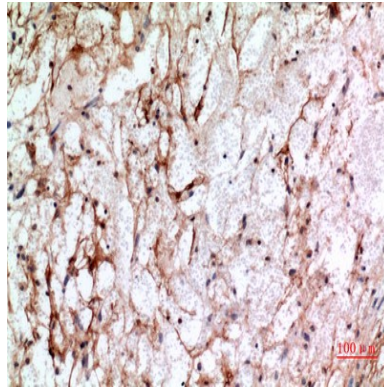


Western Blot analysis of MCF7, PC12 cells using CD225 Polyclonal Antibody.. Secondary antibody was diluted at 1:20000

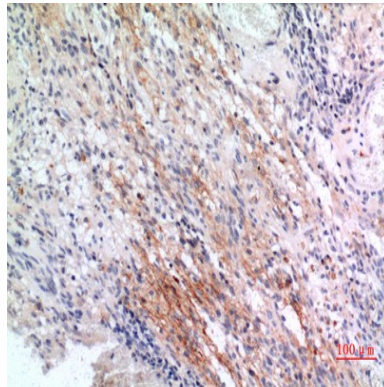


Immunohistochemical analysis of paraffin-embedded human-liver, antibody was diluted at 1:100

Product Name: CD225 Rabbit Polyclonal Antibody
Catalog #: APRab08288



Immunohistochemical analysis of paraffin-embedded human-brain, antibody was diluted at 1:100



Immunohistochemical analysis of paraffin-embedded human-brain, antibody was diluted at 1:100

Note

For research use only.